

# DATASHEET

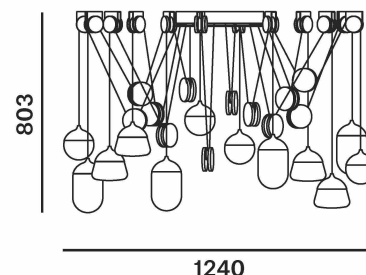
Type: **PLANETS MINI**  
Name: Pendant light  
ID: PC1370  
Designed by:



Download

## Description

The Planets collection stands out with its remarkable versatility, offering a broader dimension in interior lighting with installations ranging from a single light to vast clouds of up to twelve lights. The Planets family has been expanded with a new version called Planets MINI.



## Tech. description

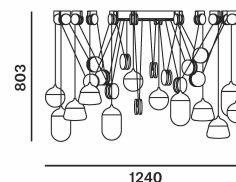
The light is hung from a central metal ceiling canopy, which houses the electronics. The individual lights are hung from the ceiling by means of pulleys and balanced with counterweights. The system allows variable vertical positioning of each light independently. Each light comprises a power cable, metal cover, LED module, and a glass shade.

Available colour options: <https://mbapi.cz/red/pis/eu/en/pc1370>

## CONSTRUCTION SPECIFICATION

**Weight:** 43 kg  
**Construction material:** glass, metal  
**Cord length [mm]:** individual  
**Mounting:** Ceiling  
**Environment:** Indoor

## DIMENSIONS [mm]



## ELECTRICAL SPECIFICATION

**Input voltage [V]:** 110 - 240 V  
**Frequency [Hz]:** 50-60 Hz  
**Max. power [W]:** 93 W LED  
**Coverage IP:** 20  
**Socket:** -  
**Light source:** LED module  
**Energy class:** E

## CERTIFICATIONS



BROKIS S.R.O.  
ŠPANILOVA 1315/25  
163 00 PRAHA 6 - ŘEPY  
CZECH REPUBLIC

ORG ID 64940799  
VAT ID CZ64940799  
C 42174 MĚSTSKÝ SOUD  
V PRAZE

TEL +420 567 211 517  
TECHNICAL@BROKIS.CZ  
INFO@BROKIS.CZ  
WWW.BROKIS.CZ

2025\_03  
PAGE 1



CM16714 BAMBOO LED module -  
D55mm/6,5W/1CH/2700K/Ra90

Type	LED module
Lamp wattage [W]	6.5 W
Input voltage [V]	24 VDC
Energy class	E
Flux [lm]	735 lm
Light colour [K]	2700 K
CRI	90+
Dimmable	yes



CM17129 BAMBOO LED modul -  
D55mm/6,5W/2CH LUXEON/180hm/  
1800K/6500K/Ra90

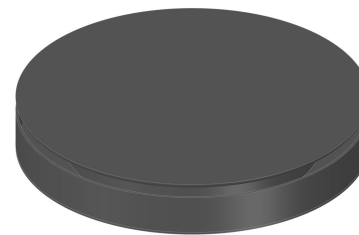
Type	LED module
Lamp wattage [W]	6.5 W
Input voltage [V]	24 VDC
Energy class	E
Flux [lm]	735 lm
Light colour [K]	1800-6500 K
CRI	90+
Dimmable	yes



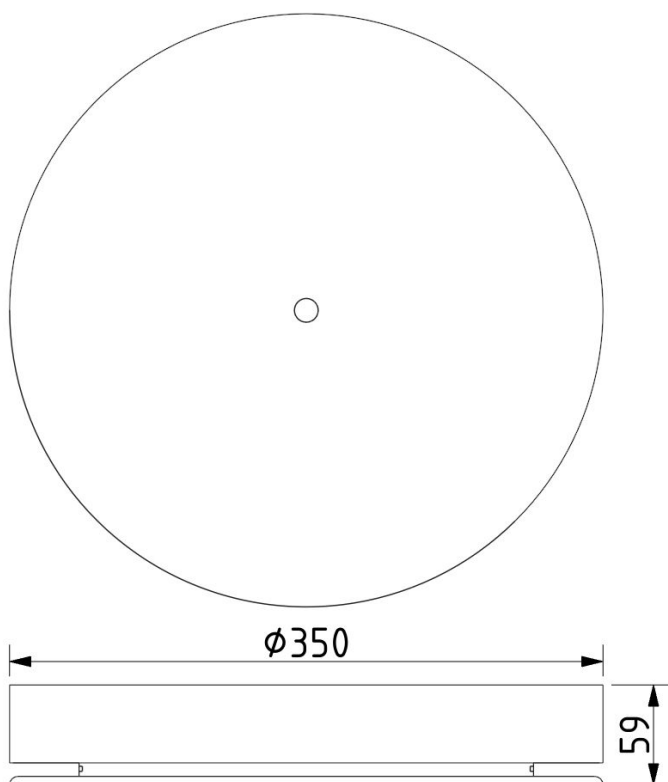


### INNER FIXTURE

Dimensions O x w [mm] 350 X 59  
Weight [kg] 6.9  
Material metal



### Drawing



### Hole placement

