

# DATASHEET

Type: **GEOMETRIC**  
Name: Pendant light  
ID: PC1150  
Designed by: Boris Klimek & Lenka Dámová



Download

## Description

Geometric accentuates the aesthetic expression and structure of BROKISGLASS, which itself is remarkably distinctive. The collection is defined by basic geometric shapes that characterize the overall contours of the lights and instill them with a singular graphic element to achieve a striking contrast with the animate, almost sculptural makeup of the glass.

## Tech. description

The light comprises a metal frame encased from both sides in BROKISGLASS, while internal LED 24VDC modules. The light is hung on two steel wires extending from a ceiling canopy, which also houses the electronics.

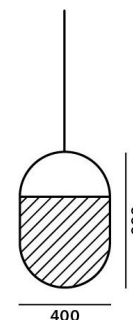


Available colour options: <https://mbapi.cz/red/pis/eu/en/pc1150>

## CONSTRUCTION SPECIFICATION

Weight: 14,5 kg  
Construction material: glass, metal  
Cord length [mm]: 2.200 mm  
Mounting: Ceiling  
Environment: Indoor

## DIMENSIONS [mm]



## ELECTRICAL SPECIFICATION

Input voltage [V]: 100 - 240 V  
Frequency [Hz]: 50-60 Hz  
Max. power [W]: 30 W  
Coverage IP: 20  
Socket: -  
Light source: LED module  
Energy class: E

## CERTIFICATIONS

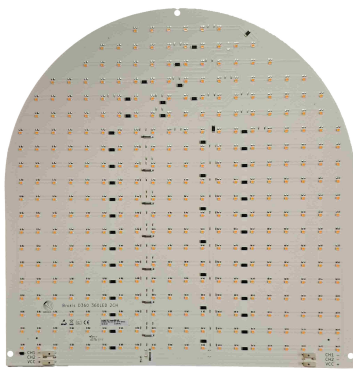


BROKIS S.R.O.  
ŠPANILOVA 1315/25  
163 00 PRAHA 6 - ŘEPY  
CZECH REPUBLIC

ORG ID 64940799  
VAT ID CZ64940799  
C 42174 MĚSTSKÝ SOUD  
V PRAZE

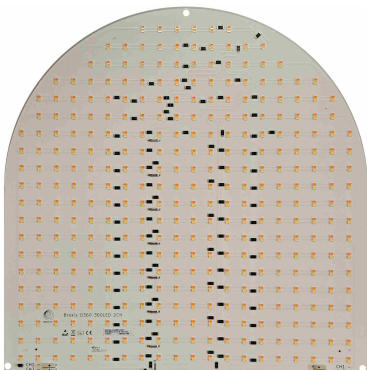
TEL +420 567 211 517  
TECHNICAL@BROKIS.CZ  
INFO@BROKIS.CZ  
WWW.BROKIS.CZ

2024\_03  
PAGE 1



**CM16763 LED modul GEOMETRIC**  
oval - 358mmx364mm/15W -  
DNA\_24V/RA90/1CH 2700K

Type	LED module
Lamp wattage [W]	15 W
Input voltage [V]	24 VDC
Energy class	E
Flux [lm]	lm
Light colour [K]	2700 K
CRI	90+
Dimmable	yes



**CM17318 LED modul GEOMETRIC**  
oval - 358mmx364mm/15W -  
DNA\_24V/LUXEON/RA90/2CH 1800K/

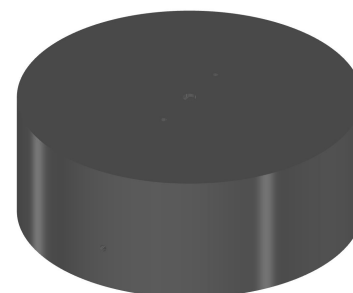
Type	LED module
Lamp wattage [W]	15 W
Input voltage [V]	24 VDC
Energy class	E
Flux [lm]	1300-2085 lm
Light colour [K]	1800-6500 K
CRI	90+
Dimmable	yes



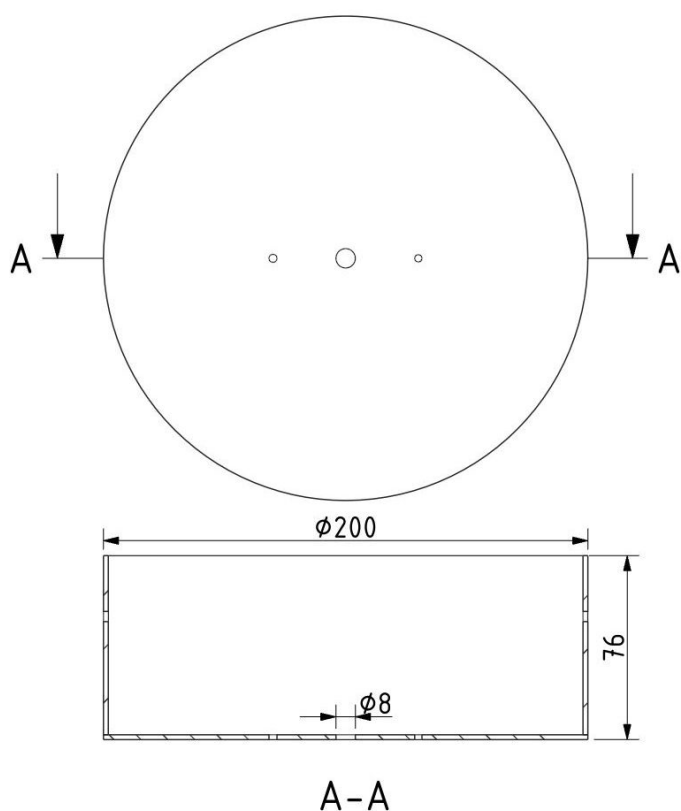


### INNER FIXTURE

Dimensions O x w [mm]	200 x 76 mm
Weight [kg]	2,6 kg
Material	metal



### Drawing



### Hole placement

