

DATASHEET

Type: **GEOMETRIC**
Name: Pendant light
ID: PC1146
Designed by: Boris Klimek & Lenka Dámová



Download

Description

Geometric accentuates the aesthetic expression and structure of BROKISGLASS, which itself is remarkably distinctive. The collection is defined by basic geometric shapes that characterize the overall contours of the lights and instill them with a singular graphic element to achieve a striking contrast with the animate, almost sculptural makeup of the glass.

Tech. description

The light comprises a metal frame encased from both sides in BROKISGLASS, while internal LED 24VDC modules. The light is hung on two steel wires extending from a ceiling canopy, which also houses the electronics.

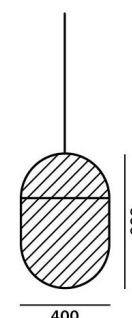


Available colour options: <https://mbapi.cz/red/pis/eu/en/pc1146>

CONSTRUCTION SPECIFICATION

Weight: 17 kg
Construction material: glass, metal
Cord length [mm]: 2.200 mm
Mounting: Ceiling
Environment: Indoor

DIMENSIONS [mm]



ELECTRICAL SPECIFICATION

Input voltage [V]: 100 - 240 V
Frequency [Hz]: 50-60 Hz
Max. power [W]: 40 W
Coverage IP: 20
Socket: -
Light source: LED module
Energy class: E

CERTIFICATIONS

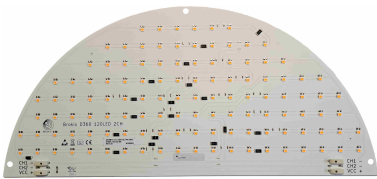


BROKIS S.R.O.
ŠPANILOVA 1315/25
163 00 PRAHA 6 - ŘEPY
CZECH REPUBLIC

ORG ID 64940799
VAT ID CZ64940799
C 42174 MĚSTSKÝ SOUD
V PRAZE

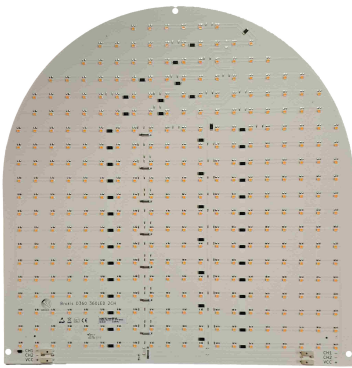
TEL +420 567 211 517
TECHNICAL@BROKIS.CZ
INFO@BROKIS.CZ
WWW.BROKIS.CZ

2024_03
PAGE 1



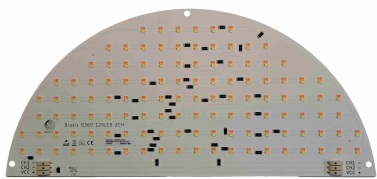
CM16877 LED modul GEOMETRIC
semicircle D360 1x120LED Ra90
2700K 1CH

Type	LED module
Lamp wattage [W]	5 W
Input voltage [V]	24 VDC
Energy class	E
Flux [lm]	lm
Light colour [K]	2700 K
CRI	90+
Dimmable	yes



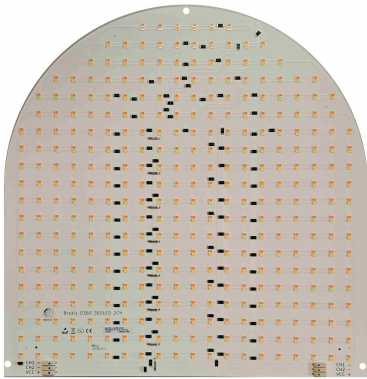
CM16763 LED modul GEOMETRIC
oval - 358mmx364mm/15W -
DNA_24V/RA90/1CH 2700K

Type	LED module
Lamp wattage [W]	15 W
Input voltage [V]	24 VDC
Energy class	E
Flux [lm]	lm
Light colour [K]	2700 K
CRI	90+
Dimmable	yes



CM17124 LED modul GEOMETRIC
semicircle D360 2x120LED/10W
LUXEON Ra90 1800K/6500K 2CH

Type	LED module
Lamp wattage [W]	5 W
Input voltage [V]	24 VDC
Energy class	E
Flux [lm]	433-695 lm
Light colour [K]	1800-6500 K
CRI	90+
Dimmable	yes



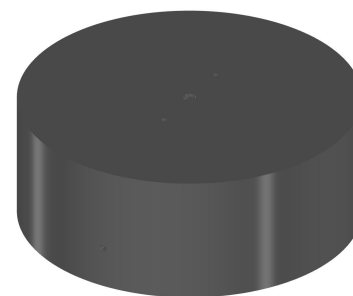
CM17318 LED modul GEOMETRIC
oval - 358mmx364mm/15W -
DNA_24V/LUXEON/RA90/2CH 1800K/

Type	LED module
Lamp wattage [W]	15 W
Input voltage [V]	24 VDC
Energy class	E
Flux [lm]	1300-2085 lm
Light colour [K]	1800-6500 K
CRI	90+
Dimmable	yes

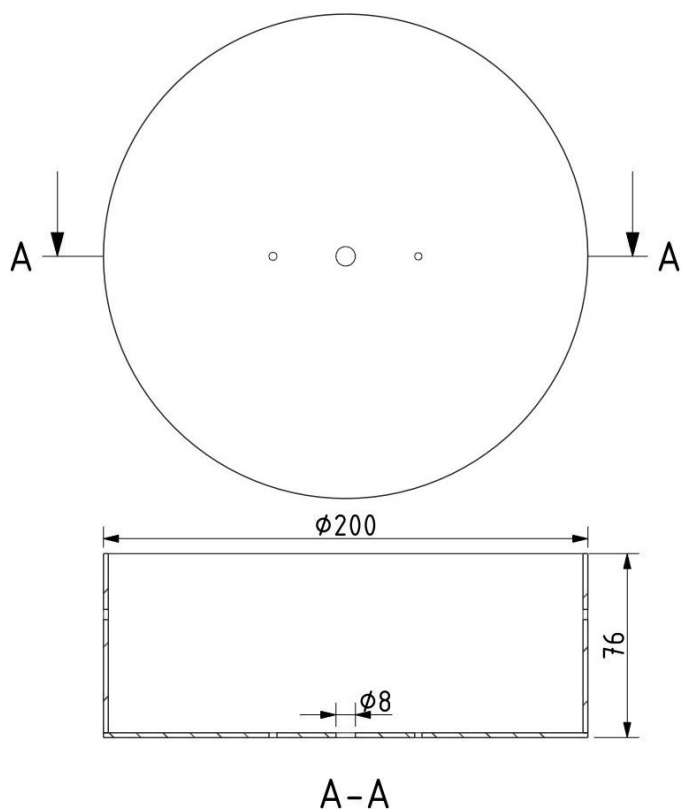


INNER FIXTURE

Dimensions O x w [mm] 200 x 76 mm
Weight [kg] 2,6 kg
Material metal



Drawing



Hole placement

