

# DATASHEET

Type: **WHISTLE**  
Name: Pendant light  
ID: PC952  
Designed by: Lucie Koldová



Download

## Description

The Whistle collection is, quite literally, a living reference to the work of glassmakers, as inspiration for the design was taken from the blowpipe, which in Czech is known as a glassmaker's whistle. The lucid body of the piece traces the silhouette of a cone of light, and a distinct spotlight with hand-pressed metal shield constitutes its imaginary heart.



## Tech. description

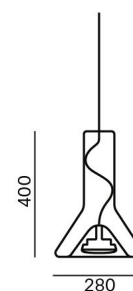
The light consists of a glass body with Brokis connector and lead cable with connector. The bottom section comprises a metal reflector with GX53 light source socket. The light includes a metal ceiling canopy.

Available colour options: <https://mbapi.cz/red/pis/eu/en/pc952>

## CONSTRUCTION SPECIFICATION

Weight: 2.7 kg  
Construction material: glass, metal  
Cord length [mm]: 2000 mm  
Mounting: Ceiling  
Environment: Indoor

## DIMENSIONS [mm]



## ELECTRICAL SPECIFICATION

Input voltage [V]: 230 V  
Frequency [Hz]: 50-60 Hz  
Max. power [W]: 15 W LED  
Coverage IP: 20  
Socket: GX53  
Light source: -  
Energy class: A+ to B depending on light source

## CERTIFICATIONS



BROKIS S.R.O.  
ŠPANILOVA 1315/25  
163 00 PRAHA 6 - ŘEPY  
CZECH REPUBLIC

ORG ID 64940799  
VAT ID CZ64940799  
C 42174 MĚSTSKÝ SOUD  
V PRAZE

TEL +420 567 211 517  
TECHNICAL@BROKIS.CZ  
INFO@BROKIS.CZ  
WWW.BROKIS.CZ

2020\_09  
PAGE 1

# DATASHEET

## RECOMMENDED BULBS



Download



### CM2353 HEMAK GX53 LED reflector 2700K 10W 700lm 220-240V

Socket	GX53
Type	LED
Lamp wattage [W]	10 W
Input voltage [V]	220 - 240 VAC
Energy class	A+
Flux [lm]	700 lm
Light colour [K]	2700 K
CRI	90+
Lifespan [h]	25000h
Dimmable	yes
Dimensions h x w [mm]	39 x 90 mm



BROKIS S.R.O.  
ŠPANIĚLOVA 1315/25  
163 00 PRAHA 6 - ŘEPY  
CZECH REPUBLIC

ORG ID 64940799  
VAT ID CZ64940799  
C 42174 MĚSTSKÝ SOUD  
V PRAZE

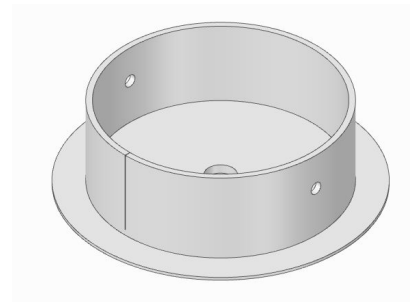
TEL +420 567 211 517  
TECHNICAL@BROKIS.CZ  
INFO@BROKIS.CZ  
WWW.BROKIS.CZ

2020\_09  
PAGE 2

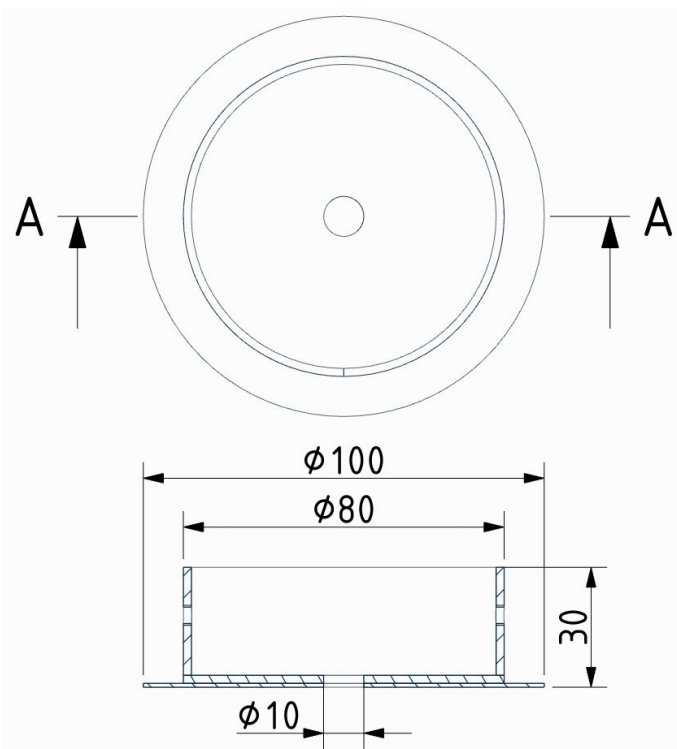


### INNER FIXTURE

Dimensions O x w [mm] 100 x 30 mm  
Weight [kg] 0,25 kg  
Material metal



### Drawing



### Hole placement

