



### Description

Under Pressure delivers an impressive contrast, an alluring juxtaposition of the organic malleability of glass and uncompromising precision of metal. The lights are manufactured in assorted sizes and typologies, backed with a broad spectrum of glass colour and surface finish options, for a look that always catches the eye and elevates the aesthetics of any interior.



### Tech. description

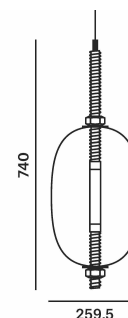
The light comprises a helical dural fixture connected by a light-conducting diffuser and glass shade held in place on both ends by robust nuts. An LED module is integrated into the upper part of the helix, illuminating the light-conducting diffuser at the centre of the glass shade. At the bottom of the helix is an LED module that illuminates the space beneath the light. This assembly is attached to the power cable via a BROKIS connector. The light is hung from a ceiling canopy, which houses the control electronics.

Available colour options: <https://mbapi.cz/red/pis/eu/en/pc1388>

## CONSTRUCTION SPECIFICATION

Weight:	4.3 kg
Construction material:	glass, metal
Cord length [mm]:	2,200 mm
Mounting:	Ceiling
Environment:	Indoor

## DIMENSIONS [mm]



## ELECTRICAL SPECIFICATION

Input voltage [V]:	100 - 240 V
Frequency [Hz]:	50-60 Hz
Max. power [W]:	7.7 W
Coverage IP:	20
Socket:	-
Light source:	LED module
Energy class:	E

## CERTIFICATIONS





**CM17826 LED modul 2,5W 24VDC  
without optic 2700K PCB5050 2.524  
927**

Type	LED module
Lamp wattage [W]	2,5 W
Input voltage [V]	24 VDC
Energy class	E
Flux [lm]	250 lm
Light colour [K]	2700 K
CRI	90+
Dimmable	yes

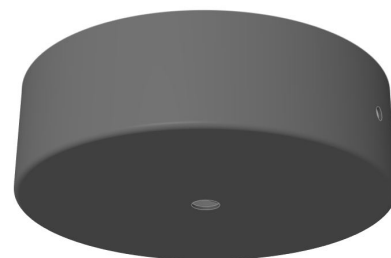
**CM17826 LED modul 2,5W 24VDC  
without optic 2700K PCB5050 2.524  
927**

Type	LED module
Lamp wattage [W]	2,5 W
Input voltage [V]	24 VDC
Energy class	E
Flux [lm]	250 lm
Light colour [K]	2700 K
CRI	90+
Dimmable	yes



### INNER FIXTURE

Dimensions O x w [mm] 168 x 50 mm  
Weight [kg] 1 kg  
Material metal



### Drawing

### Hole placement

