

DATASHEET

Type: **TROTTOLA**
Name: Pendant light
ID: PC1321
Designed by: Federico Peri



Download

Description

Trottola is a new collection of suspension and table lights whose shape elicits memories of a popular childhood toy – the spinning top. The aesthetics of the design are carried on an enchanting luminance that passes through an opal diffuser and opaline glass to reveal a playful contrast of shadows and light.

Tech. description

The pendant comprises a dural fixture with LED module, a fixture cover, and a glass shade attached to the fixture with three set screws. The pendant is hung from a wire rope anchored within a ceiling canopy, which also houses the electronics. There is a simple mechanism in the upper part of the fixture for levelling the light after installation.

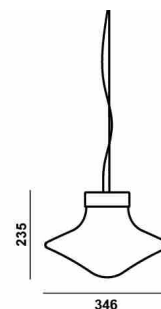


Available colour options: <https://mbapi.cz/red/pis/eu/en/pc1321>

CONSTRUCTION SPECIFICATION

Weight: 4.7 kg
Construction material: glass, metal
Cord length [mm]: 2,200 mm
Mounting: Ceiling
Environment: Indoor

DIMENSIONS [mm]



ELECTRICAL SPECIFICATION

Input voltage [V]: 100 - 240 V
Frequency [Hz]: 50-60 Hz
Max. power [W]: 11 W
Coverage IP: 20
Socket: LED module
Light source: -
Energy class: E

CERTIFICATIONS

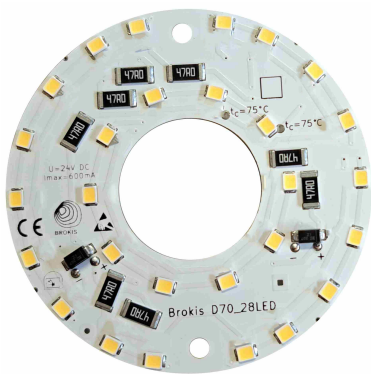


BROKIS S.R.O.
ŠPANILOVA 1315/25
163 00 PRAHA 6 - ŘEPY
CZECH REPUBLIC

ORG ID 64940799
VAT ID CZ64940799
C 42174 MĚSTSKÝ SOUD
V PRAZE

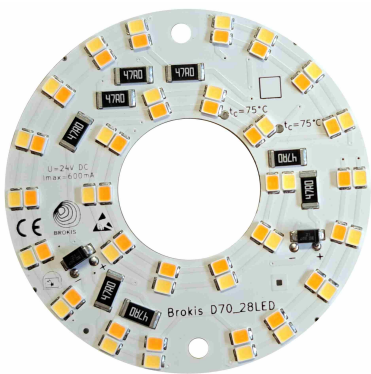
TEL +420 567 211 517
TECHNICAL@BROKIS.CZ
INFO@BROKIS.CZ
WWW.BROKIS.CZ

2023_03
PAGE 1



CM14897 DOUBLE_LED modul -
70mm/9,4W - DNA_24V/RA90/2700k

| | |
|-------------------|------------|
| Type | LED module |
| Lamp wattage [W] | 9.4 W |
| Input voltage [V] | 24 VDC |
| Energy class | E |
| Flux [lm] | 1060 lm |
| Light colour [K] | 2700 K |
| CRI | 90+ |
| Dimmable | yes |



CM16260 DOUBLE_LED modul -
70mm/9,4W - DNA_24V/RA90/
2CH2700K/6500K

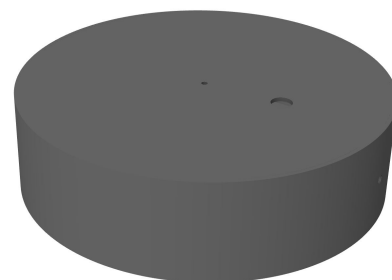
| | |
|-------------------|------------------------|
| Type | LED module |
| Lamp wattage [W] | 9.4 W |
| Input voltage [V] | 24 VDC |
| Energy class | E |
| Flux [lm] | 1060-1141 lm |
| Light colour [K] | 2700-6500 K |
| CRI | 90+ |
| Dimmable | yes - tunable white |





INNER FIXTURE

Dimensions O x w [mm] 180 x 50 mm
Weight [kg] 1.3 kg
Material metal



Drawing

Hole placement

