



**Description** The combination of handblown glass, handcrafted wood, and classic shaping has given rise to a light of ageless elegance. The collection comprises four different suspension lights, as striking alone as they are in sets, characterized by a handblown glass shade set upon on a handcrafted wooden body.

**Tech. description** The light consists of a wooden body with connector and E27 light source socket. It also includes a lead cable with connector, the glass shade, and a wood ceiling canopy.

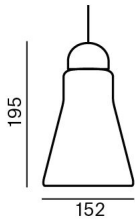


Available colour options: <https://mbapi.cz/red/pis/eu/en/pc976>

CONSTRUCTION SPECIFICATION

Weight: 1.5 kg  
Construction material: glass, wood, metal  
Cord length [mm]: 2,000 mm  
Mounting: Ceiling  
Environment: Indoor

DIMENSIONS [mm]



ELECTRICAL SPECIFICATION

Input voltage [V]: 230 V  
Frequency [Hz]: 50-60 Hz  
Max. power [W]: 15 W  
Coverage IP: 20  
Socket: E27  
Light source: -  
Energy class: A+ to B depending on light source

CERTIFICATIONS



BROKIS S.R.O.  
ŠPANILOVA 1315/25  
163 00 PRAHA 6 - ŘEPY  
CZECH REPUBLIC

ORG ID 64940799  
VAT ID CZ64940799  
C 42174 MĚSTSKÝ SOUD  
V PRAZE

TEL +420 567 211 517  
TECHNICAL@BROKIS.CZ  
INFO@BROKIS.CZ  
WWW.BROKIS.CZ

# DATASHEET

## RECOMMENDED BULBS



Download



### CM1642 HEMAK E27 LED reflector EU 2700K 13W 700lm 220-240V

Socket	E27
Type	LED
Lamp wattage [W]	13 W
Input voltage [V]	220 - 240 VAC
Energy class	A+
Flux [lm]	700 lm
Light colour [K]	2700 K
CRI	90+
Lifespan [h]	25000h
Dimmable	yes
Dimensions h x w [mm]	95 x 63 mm



BROKIS S.R.O.  
ŠPANIELOVA 1315/25  
163 00 PRAHA 6 - ŘEPY  
CZECH REPUBLIC

ORG ID 64940799  
VAT ID CZ64940799  
C 42174 MĚSTSKÝ SOUD  
V PRAZE

TEL +420 567 211 517  
TECHNICAL@BROKIS.CZ  
INFO@BROKIS.CZ  
WWW.BROKIS.CZ

2024\_02  
PAGE 2



### INNER FIXTURE

Dimensions O x w [mm]

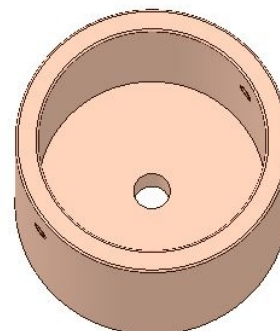
60 x 55 mm

Weight [kg]

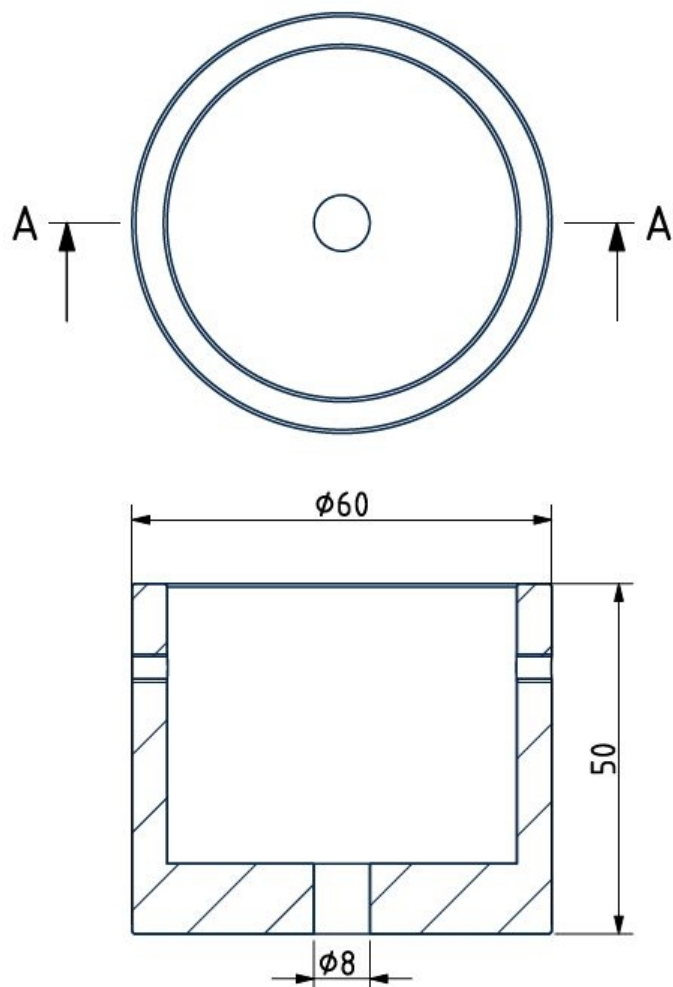
0,15 kg

Material

wood



### Drawing



### Hole placement

