



## Description

A sphere as a universal shape, yet whose upper section has been dramatically severed. The clean cut comprises the main characteristic of the Sfera project light – a timeless piece that casts a soft light from within handblown matte opal glass.

## Tech. description

The light comprises a glass shade, metal body with Brokis connector and E27 socket, metal cap, and power cord with Brokis connector. The light is hung from a ceiling canopy.

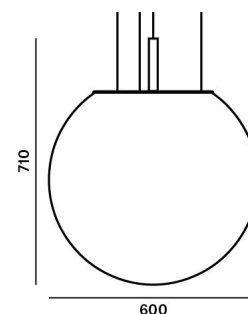


Available colour options: <https://mbapi.cz/red/pis/eu/en/pc1284>

## CONSTRUCTION SPECIFICATION

Weight: 10 kg  
 Construction material: glass, metal  
 Cord length [mm]: 2,000 mm  
 Mounting: Ceiling  
 Environment: Indoor

## DIMENSIONS [mm]



## ELECTRICAL SPECIFICATION

Input voltage [V]: 230 V  
 Frequency [Hz]: 50-60 Hz  
 Max. power [W]: 60 W  
 Coverage IP: 20  
 Socket: E27  
 Light source: -  
 Energy class: A+ to E depending on light source

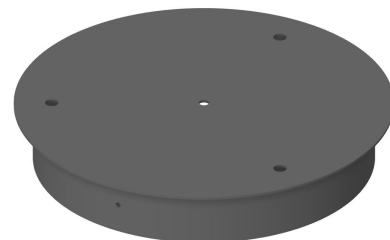
## CERTIFICATIONS



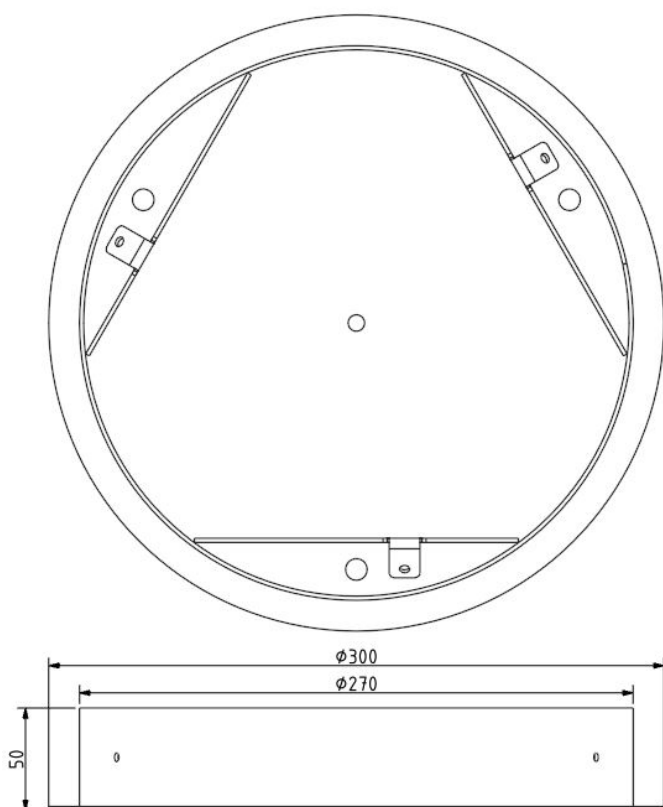


### INNER FIXTURE

Dimensions O x w [mm] 300 x 50 mm  
Weight [kg] 2,2 kg  
Material metal



### Drawing



### Hole placement

