

# DATASHEET

Type: **NIGHT BIRDS**  
Name: Pendent light  
ID: PC963  
Designed by: Boris Klimek



Download

## Description

Night Birds differ from the other collections in the unique technology applied in production, which involves melting glass into a mold and then bending it. The process makes it possible to instill delicate nuances in the shape of the wings and achieve a coloration of the glass that is different and wholly unique each time

## Tech. description

The light consists of a metal section with lead cable and GZ10 light source socket. The glass element is suspended from the metal section. The light includes a metal ceiling canopy.

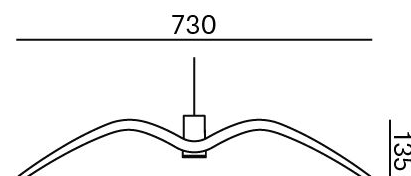


Available colour options: <https://mbapi.cz/red/pis/eu/en/pc963>

## CONSTRUCTION SPECIFICATION

Weight: 3.4 kg  
Construction material: glass, metal  
Cord length [mm]: 2,000 mm  
Mounting: Ceiling  
Environment: Indoor

## DIMENSIONS [mm]



## ELECTRICAL SPECIFICATION

Input voltage [V]: 230 V  
Frequency [Hz]: 50-60 Hz  
Max. power [W]: 10 W  
Coverage IP: 20  
Socket: GZ10  
Light source: -  
Energy class: E

## CERTIFICATIONS



BROKIS S.R.O.  
ŠPANILOVA 1315/25  
163 00 PRAHA 6 - ŘEPY  
CZECH REPUBLIC

ORG ID 64940799  
VAT ID CZ64940799  
C 42174 MĚSTSKÝ SOUD  
V PRAZE

TEL +420 567 211 517  
TECHNICAL@BROKIS.CZ  
INFO@BROKIS.CZ  
WWW.BROKIS.CZ

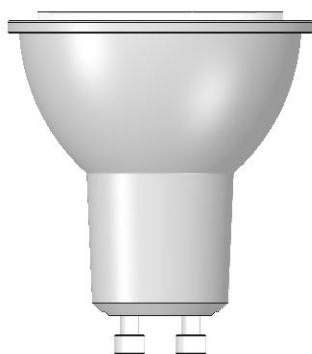
2024\_02  
PAGE 1

# DATASHEET

## RECOMMENDED BULBS



Download



### CM3037 HEMAK GU10 LED reflector silver matt 100° 2700K 5W 336lm 220- 240V

Socket	GU10
Type	LED
Lamp wattage [W]	5 W
Input voltage [V]	220 - 240 VAC
Energy class	A+
Flux [lm]	336 lm
Light colour [K]	2700 K
CRI	90+
Lifespan [h]	25000h
Dimmable	yes
Dimensions h x w [mm]	55 x 50 mm



BROKIS S.R.O.  
ŠPANIĚLOVA 1315/25  
163 00 PRAHA 6 - ŘEPY  
CZECH REPUBLIC

ORG ID 64940799  
VAT ID CZ64940799  
C 42174 MĚSTSKÝ SOUD  
V PRAZE

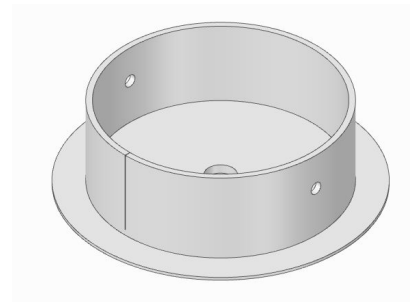
TEL +420 567 211 517  
TECHNICAL@BROKIS.CZ  
INFO@BROKIS.CZ  
WWW.BROKIS.CZ

2024\_02  
PAGE 2

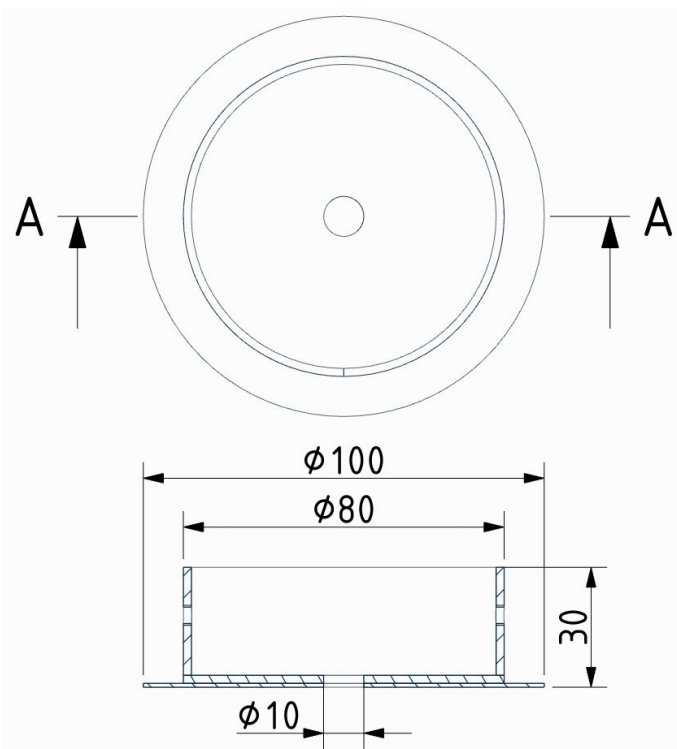


### INNER FIXTURE

Dimensions O x w [mm] 100 x 30 mm  
Weight [kg] 0,25 kg  
Material metal



### Drawing



### Hole placement

