

# DATASHEET

## NIGHT BIRDS

Type: Pendent light  
Name: PC1112  
ID: PC1112  
Designed by: Boris Klimek



Download

### Description

Night Birds Exterior are identical to the original interior collection, which was inspired by the freedom of bird flight. To withstand varying weather conditions, the lights have been modified to comply with the IP54 rating for outdoor use.



### Tech. description

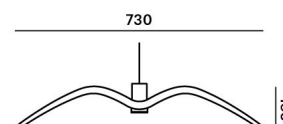
The light comprises a metal body with GZ10 socket, a dural cap, silicone power cord, and a stainless-steel ceiling canopy. The entire assembly is IP54 compliant. The glass component is suspended from the metal body. In turn, the light assembly is suspended from the ceiling canopy.

Available colour options: <https://mbapi.cz/red/pis/eu/en/pc1112>

## CONSTRUCTION SPECIFICATION

Weight: 4.2 kg  
Construction material: glass, metal  
Cord length [mm]: 2,000 mm  
Mounting: Ceiling  
Environment: Outdoor

## DIMENSIONS [mm]



## ELECTRICAL SPECIFICATION

Input voltage [V]: 230 V  
Frequency [Hz]: 50-60 Hz  
Max. power [W]: 10 W  
Coverage IP: 54  
Socket: GZ10  
Light source: -  
Energy class: E

## CERTIFICATIONS



BROKIS S.R.O.  
ŠPANIĚLOVA 1315/25  
163 00 PRAHA 6 - ŘEPY  
CZECH REPUBLIC

ORG ID 64940799  
VAT ID CZ64940799  
C 42174 MĚSTSKÝ SOUD  
V PRAZE

TEL +420 567 211 517  
TECHNICAL@BROKIS.CZ  
INFO@BROKIS.CZ  
WWW.BROKIS.CZ

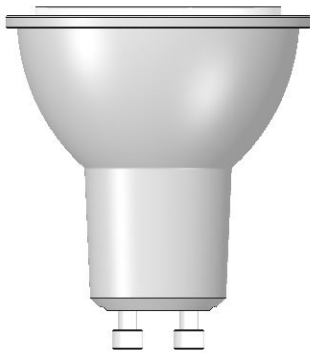
2024\_02  
PAGE 1

# DATASHEET

## RECOMMENDED BULBS



Download



**CM9963 Bulb LED GU10\_6,  
5W\_60°\_2700K\_CRI90\_220-240V**

Socket	GU10
Type	LED
Lamp wattage [W]	6,5 W
Input voltage [V]	220 - 240 VAC
Energy class	A+
Flux [lm]	336 lm
Light colour [K]	2700 K
CRI	90+
Lifespan [h]	25000h
Dimmable	yes
Dimensions h x w [mm]	55 x 50 mm



BROKIS S.R.O.  
ŠPANIĚLOVA 1315/25  
163 00 PRAHA 6 - ŘEPY  
CZECH REPUBLIC

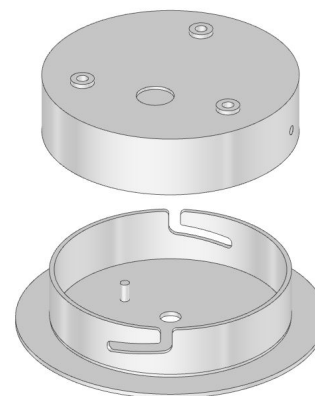
ORG ID 64940799  
VAT ID CZ64940799  
C 42174 MĚSTSKÝ SOUD  
V PRAZE

TEL +420 567 211 517  
TECHNICAL@BROKIS.CZ  
INFO@BROKIS.CZ  
WWW.BROKIS.CZ



### INNER FIXTURE

Dimensions O x w [mm] 130 x 34 mm  
Weight [kg] 0,6 kg  
Material stainless steel



### Drawing

### Hole placement

