

DATASHEET

Type: **MONA MEDIUM**
Name: Pendant light
ID: PC979
Designed by: Lucie Koldová



Download

Description

The collection is a showcase of original design and refined combinations of materials, such as glass, metal, and leather. It features a tubular LED light source with a range of colour temperatures to choose from.

Tech. description

The light comprises a glass shade, leather suspension straps, and tubular LED module with triplex opal glass diffuser. The LED module uses a Brokis connector. The entire assembly is secured with dural endcaps. The light is hung from a ceiling canopy, which also houses the electronics and terminal connectors.

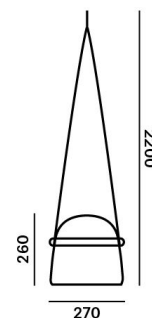


Available colour options: <https://mbapi.cz/red/pis/eu/en/pc979>

CONSTRUCTION SPECIFICATION

Weight: 6 kg
Construction material: glass, metal, leather
Cord length [mm]: 2,200 mm
Mounting: Ceiling
Environment: Indoor

DIMENSIONS [mm]



ELECTRICAL SPECIFICATION

Input voltage [V]: 110 - 240 V
Frequency [Hz]: 50-60 Hz
Max. power [W]: 7.7 W
Coverage IP: 20
Socket: -
Light source: non-user replaceable LED module
Energy class: E

CERTIFICATIONS



BROKIS S.R.O.
ŠPANIĚLOVA 1315/25
163 00 PRAHA 6 - ŘEPY
CZECH REPUBLIC

ORG ID 64940799
VAT ID CZ64940799
C 42174 MĚSTSKÝ SOUD
V PRAZE

TEL +420 567 211 517
TECHNICAL@BROKIS.CZ
INFO@BROKIS.CZ
WWW.BROKIS.CZ

2024_04
PAGE 1



**CP12091 Complete LED source for
MONA M Pendant - 2700 K, BLACK**

Type	LED module
Lamp wattage [W]	7,7 W
Input voltage [V]	24 VDC
Energy class	E
Flux [lm]	327 lm
Light colour [K]	2700 K
CRI	90+
Lifespan [h]	20000h
Dimmable	yes (PWM)

**CP12097 Complete LED source for
MONA M Pendant - 4000 K, BLACK**

Type	LED module
Lamp wattage [W]	7,7 W
Input voltage [V]	24 VDC
Energy class	E
Flux [lm]	360 lm
Light colour [K]	4000 K
CRI	90+
Lifespan [h]	20000h
Dimmable	yes (PWM)

**CP12100 Complete LED source for
MONA M Pendant - 5000 K, BLACK**

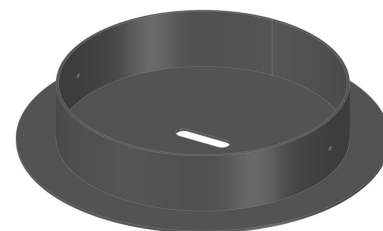
Type	LED module
Lamp wattage [W]	7,7 W
Input voltage [V]	24 VDC
Energy class	E
Flux [lm]	387 lm
Light colour [K]	5000 K
CRI	90+
Lifespan [h]	20000h
Dimmable	yes (PWM)



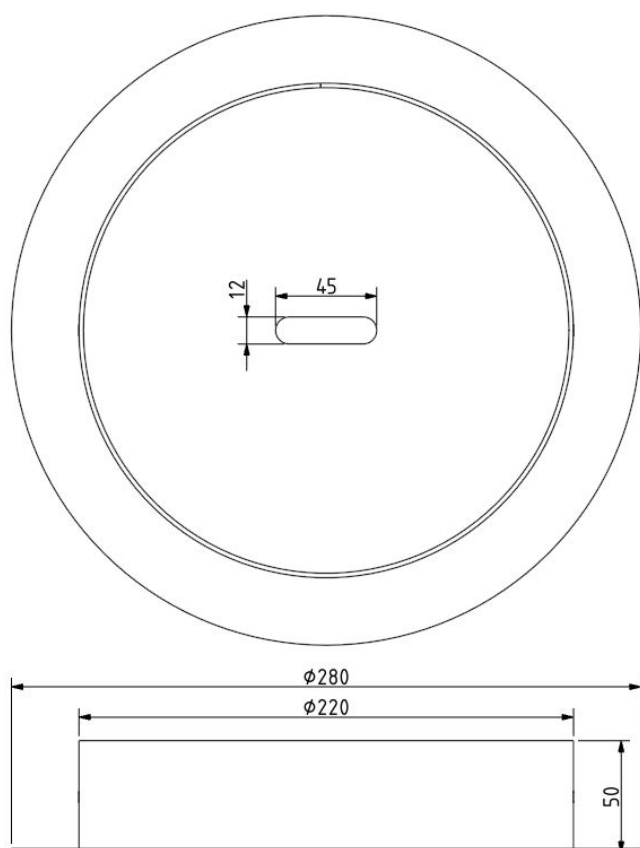


INNER FIXTURE

Dimensions O x w [mm]	280 x 50 mm
Weight [kg]	1.7 kg
Material	metal



Drawing



Hole placement

