



## Description

KNOT is a collection of stately pendant lights that appose two dramatically dissimilar materials. The design combines coarse natural fibre with smooth, transparent handblown glass to arouse a contrast as striking as it is dignified.

## Tech. description

The light comprises a glass shade, glass diffuser, metal component with LED module, and linen rope and is suspended from the ceiling canopy with a special bracket. The bottom section of the light is engineered as SELV.

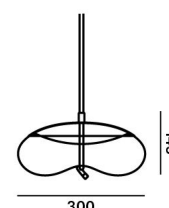


Available colour options: <https://mbapi.cz/red/pis/eu/en/pc1037>

## CONSTRUCTION SPECIFICATION

Weight:	3.5 kg
Construction material:	glass, metal, linen rope
Cord length [mm]:	Individual, max. 5,000 mm
Mounting:	Ceiling
Environment:	Indoor

## DIMENSIONS [mm]

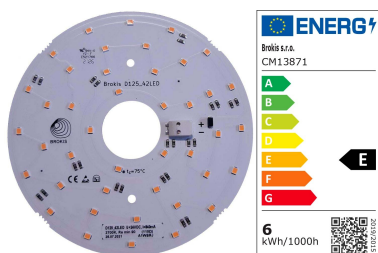


## ELECTRICAL SPECIFICATION

Input voltage [V]:	100 - 240 V
Frequency [Hz]:	50-60 Hz
Max. power [W]:	6,5 W
Coverage IP:	20
Socket:	LED module
Light source:	-
Energy class:	E

## CERTIFICATIONS





CM13871 LED	
MODUL_D125_42LED_RA90_6,5W_	
KNOT small disco CV 2700K DNA	
Type	LED module
Lamp wattage [W]	6,5 W
Input voltage [V]	24 VDC
Energy class	E
Flux [lm]	773 lm
Light colour [K]	2700 K
CRI	93
Dimmable	yes



### INNER FIXTURE

Dimensions O x w [mm]

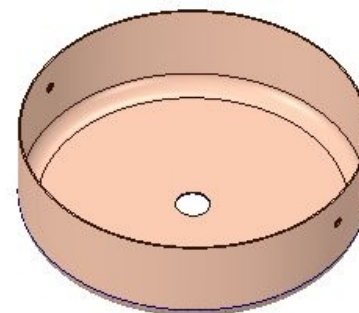
202 x 60 mm

Weight [kg]

1.15 kg

Material

metal



### Drawing

### Hole placement

