



Description

KNOT is a collection of stately pendent lights that appose two dramatically dissimilar materials. The design combines coarse natural fibre with smooth, transparent handblown glass to arouse a contrast as striking as it is dignified.



Tech. description

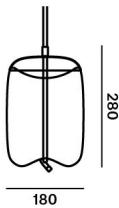
The light comprises a glass shade, glass diffuser, metal component with LED module, and linen rope and is suspended from the ceiling canopy with a special bracket. The bottom section of the light is engineered as SELV.

Available colour options: <https://mbapi.cz/red/pis/eu/en/pc1034>

CONSTRUCTION SPECIFICATION

Weight:	3.3 kg
Construction material:	glass, metal, linen rope
Cord length [mm]:	Individual, max. 5,000 mm
Mounting:	Ceiling
Environment:	Indoor

DIMENSIONS [mm]



ELECTRICAL SPECIFICATION

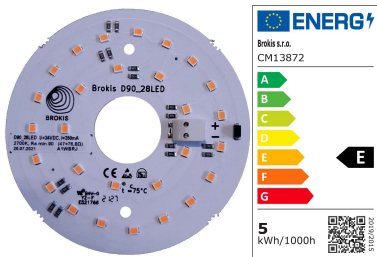
Input voltage [V]:	100 - 240 V
Frequency [Hz]:	50-60 Hz
Max. power [W]:	5 W
Coverage IP:	20
Socket:	LED module
Light source:	-
Energy class:	E

CERTIFICATIONS





Download



CM13872 LED MODUL_D90_28LED/
91_ohmu_RA90_5W_KNOT small
cilindro CC 2700K DNA

Type	LED module
Lamp wattage [W]	5 W
Input voltage [V]	24 VDC
Energy class	E
Flux [lm]	620 lm
Light colour [K]	2700 K
CRI	93
Dimmable	yes



BROKIS S.R.O.
ŠPANIĚLOVA 1315/25
163 00 PRAHA 6 - ŘEPY
CZECH REPUBLIC

ORG ID 64940799
VAT ID CZ64940799
C 42174 MĚSTSKÝ SOUD
V PRAZE

TEL +420 567 211 517
TECHNICAL@BROKIS.CZ
INFO@BROKIS.CZ
WWW.BROKIS.CZ



INNER FIXTURE

Dimensions O x w [mm]

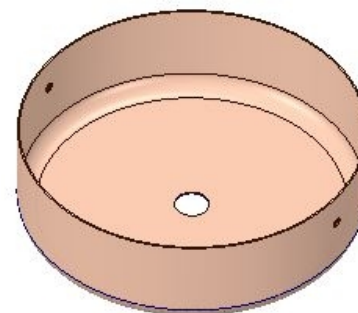
202 x 60 mm

Weight [kg]

1.15 kg

Material

metal



Drawing

Hole placement

