



Description

KNOT is a collection of stately pendent lights that appose two dramatically dissimilar materials. The design combines coarse natural fibre with smooth, transparent handblown glass to arouse a contrast as striking as it is dignified.

Tech. description

The light comprises a glass shade, glass diffuser, metal component with LED module, and linen rope and is suspended from the ceiling canopy with a special bracket. The bottom section of the light is engineered as SELV.

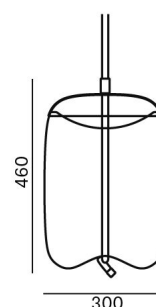


Available colour options: <https://mbapi.cz/red/pis/eu/en/pc1019>

CONSTRUCTION SPECIFICATION

| | |
|------------------------|---------------------------|
| Weight: | 7 kg |
| Construction material: | glass, metal, linen rope |
| Cord length [mm]: | Individual, max. 5,000 mm |
| Mounting: | Ceiling |
| Environment: | Indoor |

DIMENSIONS [mm]

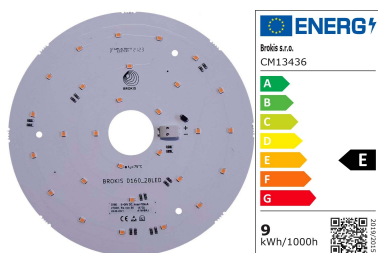


ELECTRICAL SPECIFICATION

| | |
|--------------------|-------------|
| Input voltage [V]: | 100 - 240 V |
| Frequency [Hz]: | 50-60 Hz |
| Max. power [W]: | 8,9 W |
| Coverage IP: | 20 |
| Socket: | LED module |
| Light source: | - |
| Energy class: | E |

CERTIFICATIONS





| | |
|--------------------------------------|------------|
| CM13436 LED | |
| MODUL_D160_28LED_RA90_ | |
| 9W_KNOT cilindro CV 2700K DNA | |
| Type | LED module |
| Lamp wattage [W] | 8,9 W |
| Input voltage [V] | 24 VDC |
| Energy class | E |
| Flux [lm] | 1170 lm |
| Light colour [K] | 2700 K |
| CRI | 93 |
| Dimmable | yes |



INNER FIXTURE

Dimensions O x w [mm]

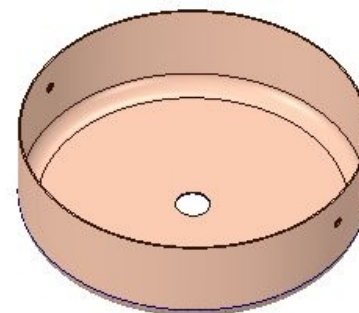
202 x 60 mm

Weight [kg]

1.15 kg

Material

metal



Drawing

Hole placement

