

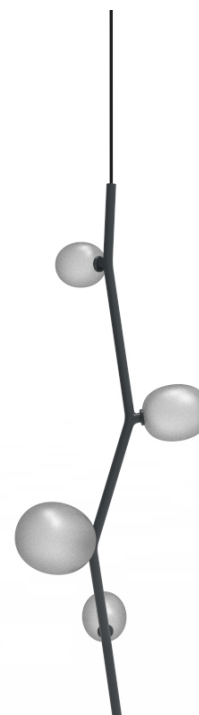


## Description

Nature and its life-giving beauty and strength serve as the model for a unique lighting concept called IVY. Just as the plant grows and climbs up the walls of a house, creating multiple images.

## Tech. description

The main body of the light comprises a dural frame and glass shades fitted with G4 sockets. The frame is connected to the power cable by means of an integrated Brokis connector. The power cable is hung from the ceiling canopy, which also houses the electronics.

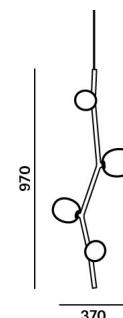


Available colour options: <https://mbapi.cz/red/pis/eu/en/pc1060>

## CONSTRUCTION SPECIFICATION

|                        |              |
|------------------------|--------------|
| Weight:                | 2.5 kg       |
| Construction material: | glass, metal |
| Cord length [mm]:      | 2,000 mm     |
| Mounting:              | Ceiling      |
| Environment:           | Indoor       |

## DIMENSIONS [mm]



## ELECTRICAL SPECIFICATION

|                    |                                   |
|--------------------|-----------------------------------|
| Input voltage [V]: | 100 - 240 V                       |
| Frequency [Hz]:    | 50-60 Hz                          |
| Max. power [W]:    | 4 x 2 W LED                       |
| Coverage IP:       | 20                                |
| Socket:            | G4, 12V                           |
| Light source:      | -                                 |
| Energy class:      | A+ to B depending on light source |

## CERTIFICATIONS



# DATASHEET

## RECOMMENDED BULBS



Download



**CM6200 G4 LED 2700K 1,2W 100lm  
12VDC HEMAK**

|                       |              |
|-----------------------|--------------|
| Socket                | G4           |
| Type                  | LED          |
| Lamp wattage [W]      | 1.2 W        |
| Input voltage [V]     | 12 VDC       |
| Flux [lm]             | 91 lm        |
| Light colour [K]      | 2700 K       |
| CRI                   | 90+          |
| Lifespan [h]          | 20000h       |
| Dimmable              | yes          |
| Dimensions h x w [mm] | 10 x 28,4 mm |



BROKIS S.R.O.  
ŠPANIELOVA 1315/25  
163 00 PRAHA 6 - ŘEPY  
CZECH REPUBLIC

ORG ID 64940799  
VAT ID CZ64940799  
C 42174 MĚSTSKÝ SOUD  
V PRAZE

TEL +420 567 211 517  
TECHNICAL@BROKIS.CZ  
INFO@BROKIS.CZ  
WWW.BROKIS.CZ

2020\_08  
PAGE 2

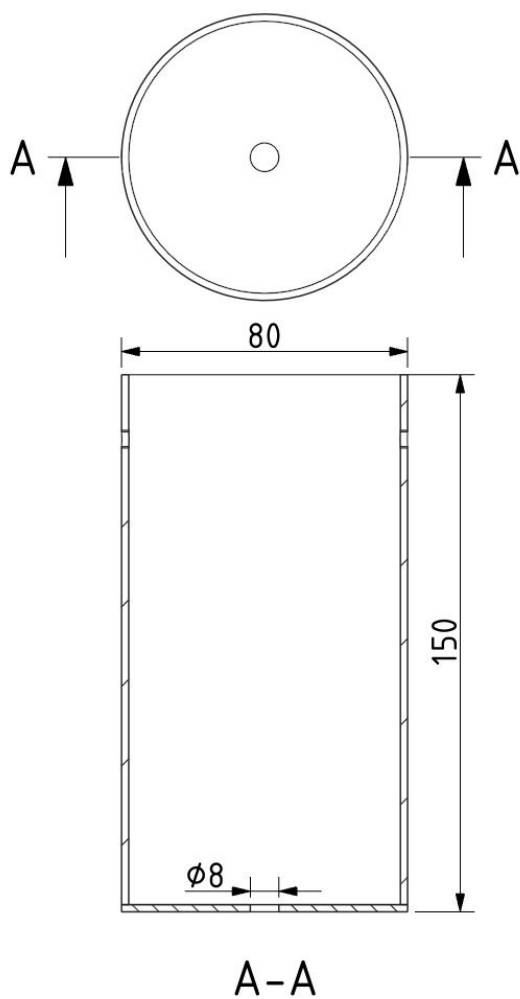


### INNER FIXTURE

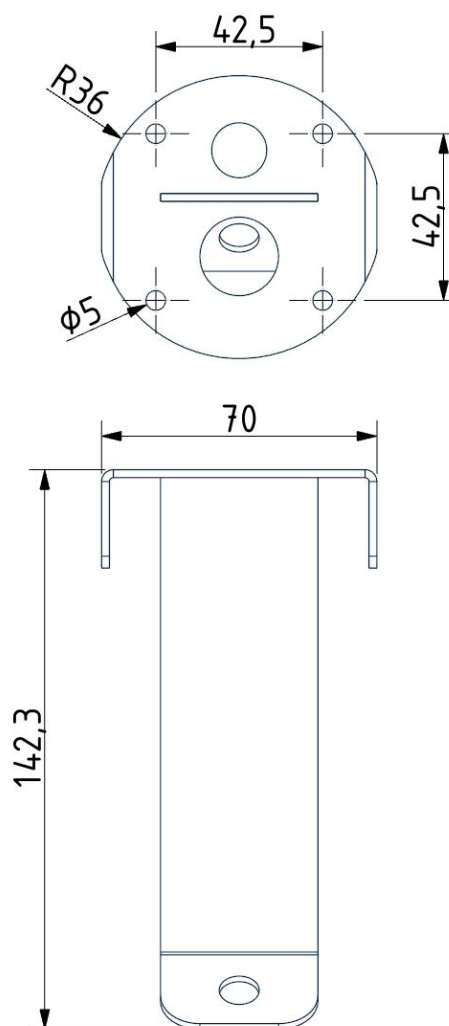
|                       |             |
|-----------------------|-------------|
| Dimensions O x w [mm] | 80 x 150 mm |
| Weight [kg]           | 0.85 kg     |
| Material              | metal       |



### Drawing



### Hole placement





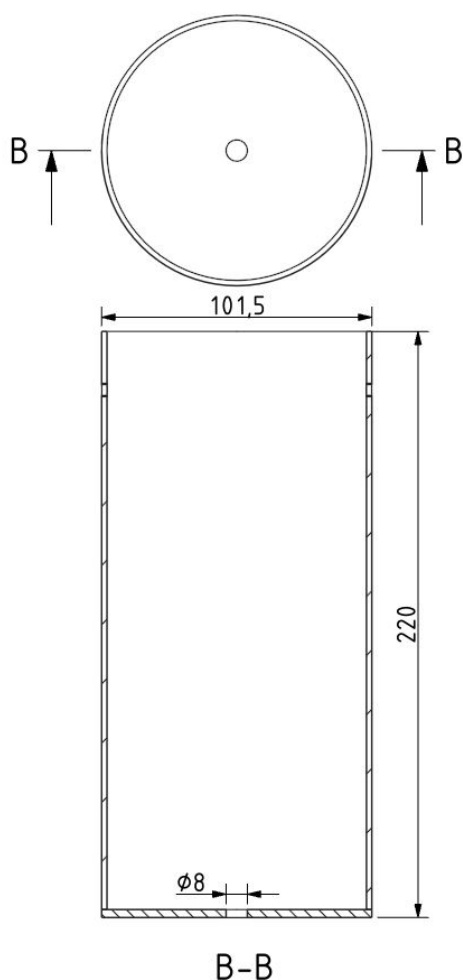
### INNER FIXTURE

Dimensions O x w [mm]  
Weight [kg]  
Material

Dimensions O x w [mm]  
Weight [kg]  
Material



### Drawing



### Hole placement

