



## Description

Nature and its life-giving beauty and strength serve as the model for a unique lighting concept called IVY. Just as the plant grows and climbs up the walls of a house, creating multiple images.



## Tech. description

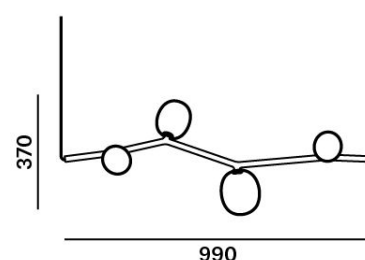
The main body of the light comprises a dural frame and glass shades fitted with G4 sockets. The frame is connected to the power cable by means of an integrated Brokis connector and is hung from a steel rope on the opposite end. The power cable is hung from the ceiling canopy, which also houses the electronics.

Available colour options: <https://mbapi.cz/red/pis/eu/en/pc1066>

## CONSTRUCTION SPECIFICATION

Weight:	2.5 kg
Construction material:	glass, metal
Cord length [mm]:	2,000 mm
Mounting:	Ceiling
Environment:	Indoor

## DIMENSIONS [mm]



## ELECTRICAL SPECIFICATION

Input voltage [V]:	100 - 240 V
Frequency [Hz]:	50-60 Hz
Max. power [W]:	4 x 2 W LED
Coverage IP:	20
Socket:	G4, 12V
Light source:	-
Energy class:	A+ to B depending on light source

## CERTIFICATIONS



# DATASHEET

## RECOMMENDED BULBS



Download



**CM6200 G4 LED 2700K 1,2W 100lm  
12VDC HEMAK**

Socket	G4
Type	LED
Lamp wattage [W]	1.2 W
Input voltage [V]	12 VDC
Flux [lm]	91 lm
Light colour [K]	2700 K
CRI	90+
Lifespan [h]	20000h
Dimmable	yes
Dimensions h x w [mm]	10 x 28,4 mm



BROKIS S.R.O.  
ŠPANIELOVA 1315/25  
163 00 PRAHA 6 - ŘEPY  
CZECH REPUBLIC

ORG ID 64940799  
VAT ID CZ64940799  
C 42174 MĚSTSKÝ SOUD  
V PRAZE

TEL +420 567 211 517  
TECHNICAL@BROKIS.CZ  
INFO@BROKIS.CZ  
WWW.BROKIS.CZ

2020\_08  
PAGE 2

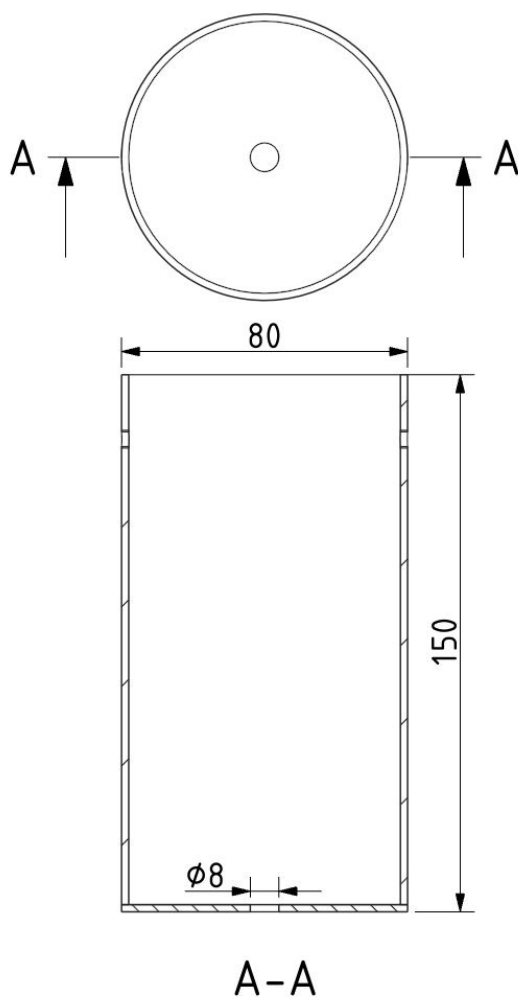


### INNER FIXTURE

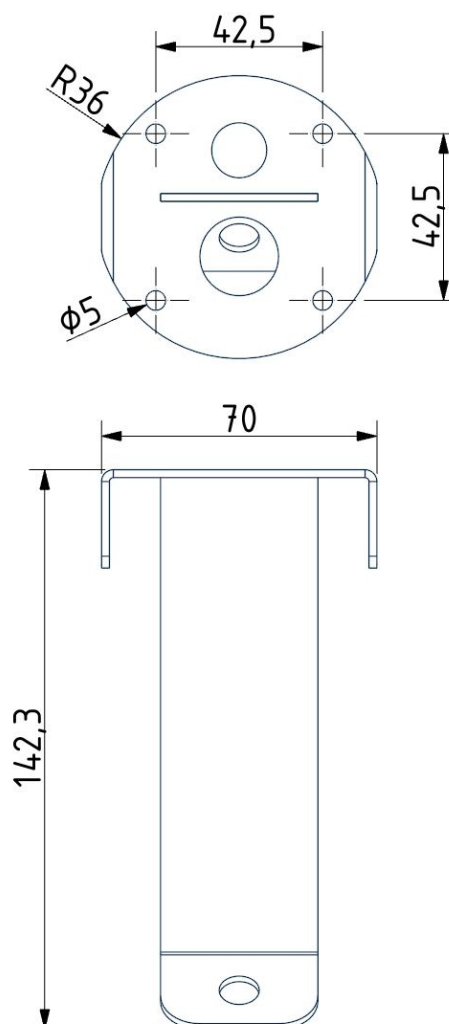
Dimensions O x w [mm] 80 x 150 mm  
Weight [kg] 0.85 kg  
Material metal



### Drawing



### Hole placement





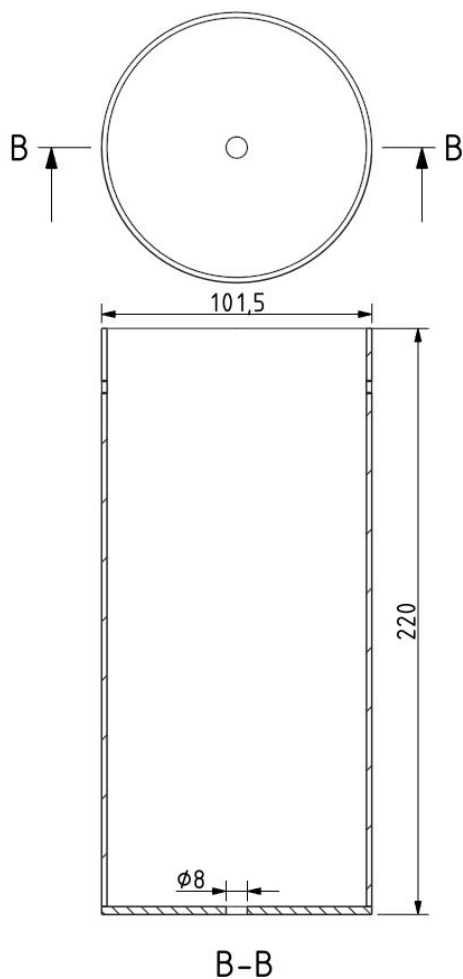
### INNER FIXTURE

Dimensions O x w [mm]  
Weight [kg]  
Material

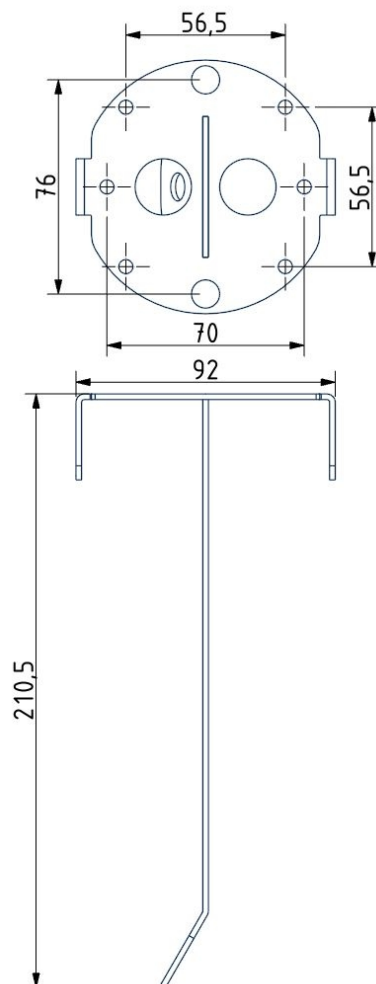
Dimensions O x w [mm]  
Weight [kg]  
Material



### Drawing



### Hole placement





**Suspension spacing:** 945 mm

### Drawing

