

**Description**

Nature and its life-giving beauty and strength serve as the model for a unique lighting concept called IVY. Just as the plant grows and climbs up the walls of a house, creating multiple images.

**Tech. description**

The main part of the light comprises a dural frame and glass shades over G4 fixtures. A rod connects the frame directly to the canopy, which houses the electronics.

Available colour options: <https://mbapi.cz/red/pis/eu/en/pc1227>

**CONSTRUCTION SPECIFICATION**

Weight:	3.7 kg
Construction material:	glass, metal
Cord length [mm]:	-
Mounting:	Ceiling
Environment:	Indoor

**DIMENSIONS [mm]****ELECTRICAL SPECIFICATION**

Input voltage [V]:	100 - 240 V
Frequency [Hz]:	50-60 Hz
Max. power [W]:	6 x 2 W LED
Coverage IP:	20
Socket:	G4, 12V
Light source:	-
Energy class:	A+ to B depending on light source

**CERTIFICATIONS**

# DATASHEET

## RECOMMENDED BULBS



Download



**CM6200 G4 LED 2700K 1,2W 100lm  
12VDC HEMAK**

Socket	G4
Type	LED
Lamp wattage [W]	1.2 W
Input voltage [V]	12 VDC
Flux [lm]	91 lm
Light colour [K]	2700 K
CRI	90+
Lifespan [h]	20000h
Dimmable	yes
Dimensions h x w [mm]	10 x 28,4 mm



BROKIS S.R.O.  
ŠPANIELOVA 1315/25  
163 00 PRAHA 6 - ŘEPY  
CZECH REPUBLIC

ORG ID 64940799  
VAT ID CZ64940799  
C 42174 MĚSTSKÝ SOUD  
V PRAZE

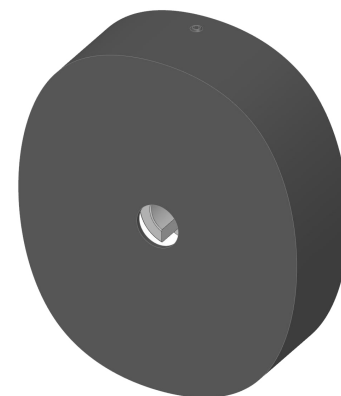
TEL +420 567 211 517  
TECHNICAL@BROKIS.CZ  
INFO@BROKIS.CZ  
WWW.BROKIS.CZ

2020\_09  
PAGE 2

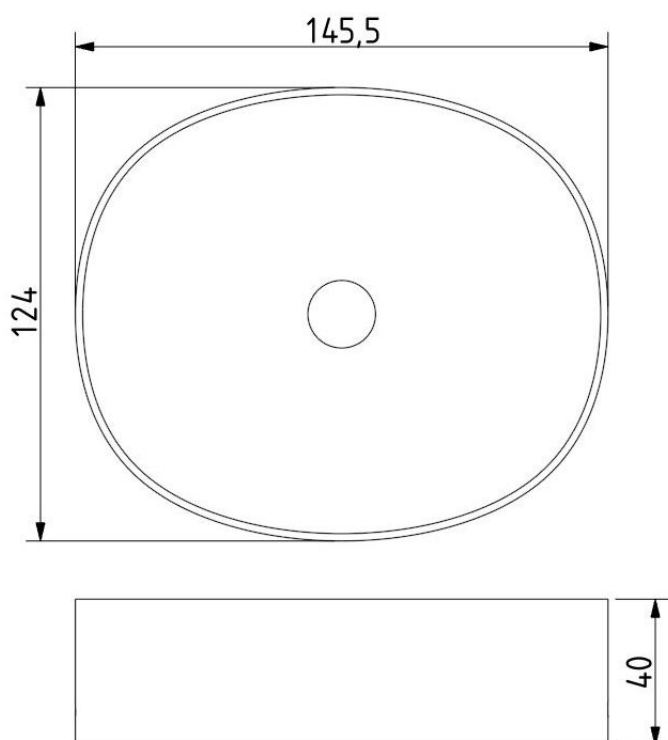


### INNER FIXTURE

Dimensions l x w x h [mm] 145,5 x 124 x 40 mm  
Weight [kg] 0,4 kg  
Material metal



### Drawing



### Hole placement

