



Description

Nature and its life-giving beauty and strength serve as the model for a unique lighting concept called IVY. Just as the plant grows and climbs up the walls of a house, creating multiple images.



Tech. description

The main part of the light comprises a dural frame and glass shades over G4 fixtures. A rod connects the frame directly to the canopy, which houses the electronics.

Available colour options: <https://mbapi.cz/red/pis/eu/en/pc1225>

CONSTRUCTION SPECIFICATION

Weight: 2.5 kg
 Construction material: glass, metal
 Cord length [mm]: -
 Mounting: Ceiling
 Environment: Indoor

DIMENSIONS [mm]



ELECTRICAL SPECIFICATION

Input voltage [V]: 100 - 240 V
 Frequency [Hz]: 50-60 Hz
 Max. power [W]: 4 x 2 W LED
 Coverage IP: 20
 Socket: G4, 12V
 Light source: -
 Energy class: A+ to B depending on light source

CERTIFICATIONS



DATASHEET

RECOMMENDED BULBS



Download



**CM6200 G4 LED 2700K 1,2W 100lm
12VDC HEMAK**

Socket	G4
Type	LED
Lamp wattage [W]	1.2 W
Input voltage [V]	12 VDC
Flux [lm]	91 lm
Light colour [K]	2700 K
CRI	90+
Lifespan [h]	20000h
Dimmable	yes
Dimensions h x w [mm]	10 x 28,4 mm



BROKIS S.R.O.
ŠPANIELOVA 1315/25
163 00 PRAHA 6 - ŘEPY
CZECH REPUBLIC

ORG ID 64940799
VAT ID CZ64940799
C 42174 MĚSTSKÝ SOUD
V PRAZE

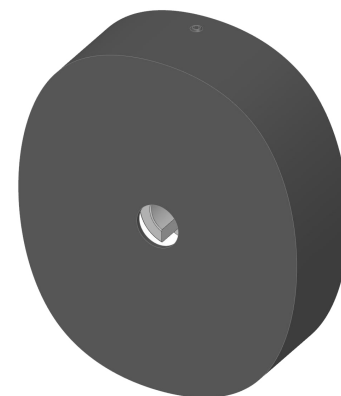
TEL +420 567 211 517
TECHNICAL@BROKIS.CZ
INFO@BROKIS.CZ
WWW.BROKIS.CZ

2020_09
PAGE 2

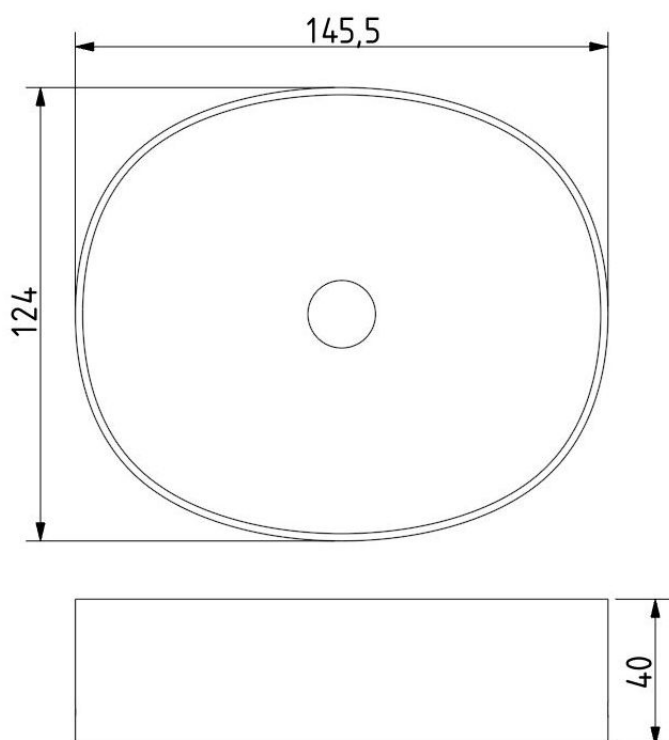


INNER FIXTURE

Dimensions l x w x h [mm] 145,5 x 124 x 40 mm
Weight [kg] 0,4 kg
Material metal



Drawing



Hole placement

