



Description

The Convex collection experiments with BROKISGLASS and makes use of its specific properties and processing methods. Designed and manufactured in the form of a convex lens, it pushes the boundaries of function, visual representation, and shaping of this unique and vibrant material. Together with a minimalist, precisely crafted body, it creates an unobtrusive yet unconventional luminaire. The utilitarian design, which highlights the beauty and optical properties of the glass, is well suited to a broad range of applications in both residential and commercial spaces. The Convex collection comprises a pendant and a wall light, each available in two sizes, whereas the wall variant can also be mounted on the ceiling. Choose from clear triplex opal, or a combination of clear triplex opal and grey triplex opal, where the darker fragments gradually transition to lighter towards the centre of the glass.



Tech. description

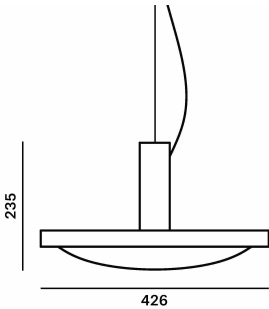
The light comprises a milled dural body with integrated LED module and balancing system, a wire rope, a power cable, and a shade made of Brokisglass, which is attached to the body of the light via bayonet system. The light is hung on a steel cable extending from a metal ceiling canopy.

Available colour options: <https://mbapi.cz/red/pis/eu/en/pc1274>

CONSTRUCTION SPECIFICATION

|                        |              |
|------------------------|--------------|
| Weight:                | 9,5 kg       |
| Construction material: | glass, metal |
| Cord length [mm]:      | 2.200 mm     |
| Mounting:              | Ceiling      |
| Environment:           | Indoor       |

DIMENSIONS [mm]



ELECTRICAL SPECIFICATION

|                    |             |
|--------------------|-------------|
| Input voltage [V]: | 100 - 240 V |
| Frequency [Hz]:    | 50-60 Hz    |
| Max. power [W]:    | 88 W        |
| Coverage IP:       | 20          |
| Socket:            | -           |
| Light source:      | LED module  |
| Energy class:      | E           |

CERTIFICATIONS



BROKIS S.R.O.  
ŠPANIĚLOVA 1315/25  
163 00 PRAHA 6 - ŘEPY  
CZECH REPUBLIC

ORG ID 64940799  
VAT ID CZ64940799  
C 42174 MĚSTSKÝ SOUD  
V PRAZE

TEL +420 567 211 517  
TECHNICAL@BROKIS.CZ  
INFO@BROKIS.CZ  
WWW.BROKIS.CZ



**CM17867 LED**  
**MODUL\_D359\_368LED\_RA90/ 1CH\_**  
**80W\_CONVEX CV 2700K DNA**

|                   |            |
|-------------------|------------|
| Type              | LED module |
| Lamp wattage [W]  | 75 W       |
| Input voltage [V] | 24 VDC     |
| Energy class      | E          |
| Flux [lm]         | 9983 lm    |
| Light colour [K]  | 2700 K     |
| CRI               | 90         |
| Dimmable          | yes        |

**CM17868 LED**  
**MODUL\_D359\_368LED\_RA90/ 2CH\_**  
**80W\_CONVEX CV 2700K DNA**

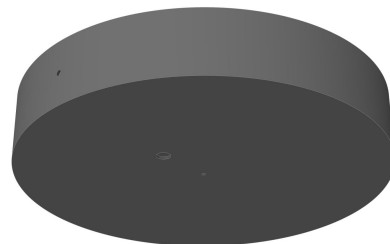
|                   |               |
|-------------------|---------------|
| Type              | LED module    |
| Lamp wattage [W]  | 75 W          |
| Input voltage [V] | 24 VDC        |
| Energy class      | E             |
| Flux [lm]         | 7430-11987 lm |
| Light colour [K]  | 1800-6500 K   |
| CRI               | 90            |
| Dimmable          | yes           |



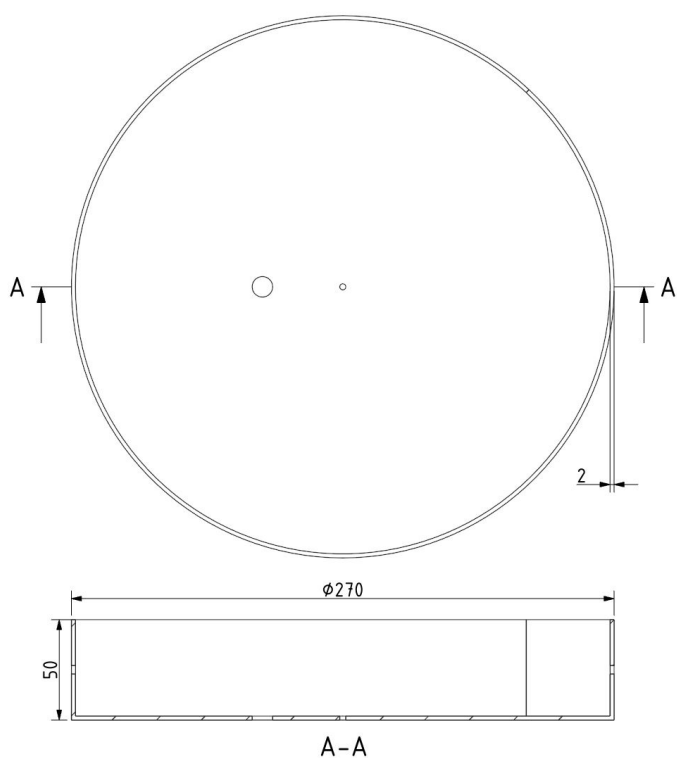


### INNER FIXTURE

Dimensions O x w [mm] 270 x 50 mm  
Weight [kg] 2.5 kg  
Material metal



### Drawing



### Hole placement

