

# DATASHEET

Type: **COMET**  
Name: Pendant light  
ID: PC1377  
Designed by:



Download

## Description

Each Comet is handblown from laminated glass, with grains of silica sand added between the layers to render a unique celestial effect that gently diffuses the light throughout the surrounding space. Comet pendants are equipped with modern technologies, such as an efficient LED source and diffuser for both direct and indirect lighting, and fluid touch dimming that puts the desired ambience at the user's fingertips.

## Tech. description

The light comprises a dural fixture with integrated LED module, a diffusor, and a glass shade. The light is suspended on a cable from a metal ceiling canopy.

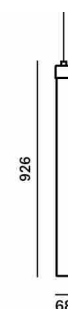


Available colour options: <https://mbapi.cz/red/pis/eu/en/pc1377>

## CONSTRUCTION SPECIFICATION

Weight: 3 kg  
Construction material: glass, metal  
Cord length [mm]: 2,200 mm  
Mounting: Ceiling  
Environment: Indoor

## DIMENSIONS [mm]



## ELECTRICAL SPECIFICATION

Input voltage [V]: 100 - 240 V  
Frequency [Hz]: 50-60 Hz  
Max. power [W]: 5.5 W  
Coverage IP: 20  
Socket: -  
Light source: LED module  
Energy class: E

## CERTIFICATIONS



BROKIS S.R.O.  
ŠPANIĚLOVA 1315/25  
163 00 PRAHA 6 - ŘEPY  
CZECH REPUBLIC

ORG ID 64940799  
VAT ID CZ64940799  
C 42174 MĚSTSKÝ SOUD  
V PRAZE

TEL +420 567 211 517  
TECHNICAL@BROKIS.CZ  
INFO@BROKIS.CZ  
WWW.BROKIS.CZ

2025\_02  
PAGE 1



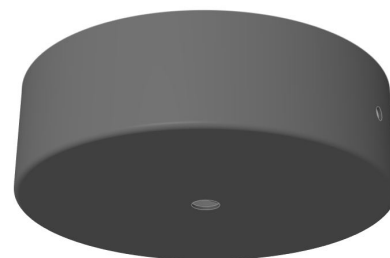
**CM17826 LED modul 2,5W 24VDC  
without optic 2700K PCB5050 2.524  
927**

|                   |            |
|-------------------|------------|
| Type              | LED module |
| Lamp wattage [W]  | 2,5 W      |
| Input voltage [V] | 24 VDC     |
| Energy class      | E          |
| Flux [lm]         | 250 lm     |
| Light colour [K]  | 2700 K     |
| CRI               | 90+        |
| Dimmable          | yes        |



### INNER FIXTURE

Dimensions O x w [mm] 168 x 50 mm  
Weight [kg] 1 kg  
Material metal



### Drawing

### Hole placement

