

DATASHEET

Type: **BONBORI**
Name: Floor light
ID: PC1166
Designed by: Fumie Shibata Desing SS company



Download

Description

The first outdoor lighting collection in the Brokis portfolio, Bonbori was created by world-renowned Japanese designer Fumie Shibata, who took inspiration from the traditional paper lamps lining the paths to shrines and temples during the annual rice harvest festival in Japan.

Tech. description

The light comprises a metal body, base bracket, glass shade, and diffuser. All metal components are crafted from stainless steel. The light is IP44 compliant and is connected directly to inground wiring.

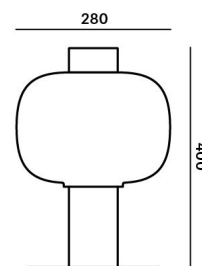


Available colour options: <https://mbapi.cz/red/pis/eu/en/pc1166>

CONSTRUCTION SPECIFICATION

Weight: 5.8 kg
Construction material: glass, stainless steel
Cord length [mm]: -
Mounting: Floor
Environment: Outdoor

DIMENSIONS [mm]



ELECTRICAL SPECIFICATION

Input voltage [V]: 230 V
Frequency [Hz]: 50-60 Hz
Max. power [W]: 60 W
Coverage IP: 44
Socket: E27
Light source: -
Energy class: A+ to E depending on light source

CERTIFICATIONS



BROKIS S.R.O.
ŠPANIĚLOVA 1315/25
163 00 PRAHA 6 - ŘEPY
CZECH REPUBLIC

ORG ID 64940799
VAT ID CZ64940799
C 42174 MĚSTSKÝ SOUD
V PRAZE

TEL +420 567 211 517
TECHNICAL@BROKIS.CZ
INFO@BROKIS.CZ
WWW.BROKIS.CZ

2024_02
PAGE 1

DATASHEET

RECOMMENDED BULBS



Download



CM8790 SEGULA E27 LED tube EU 2800 K 12 W 750 lm 220-240V dimmable

Socket	E27
Type	LED filament
Lamp wattage [W]	11 W
Input voltage [V]	220 - 240 VAC
Energy class	E
Flux [lm]	1250 lm
Light colour [K]	2700 K
CRI	90
Lifespan [h]	20000h
Dimmable	yes
Dimensions h x w [mm]	175 x 32 mm



BROKIS S.R.O.
ŠPANIĚLOVA 1315/25
163 00 PRAHA 6 - ŘEPY
CZECH REPUBLIC

ORG ID 64940799
VAT ID CZ64940799
C 42174 MĚSTSKÝ SOUD
V PRAZE

TEL +420 567 211 517
TECHNICAL@BROKIS.CZ
INFO@BROKIS.CZ
WWW.BROKIS.CZ

2024_02
PAGE 2



INNER FIXTURE

Dimensions O x w [mm]

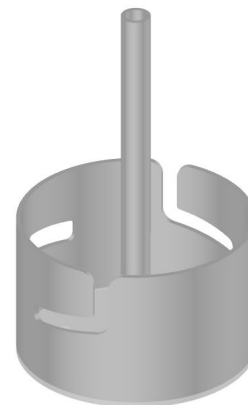
80x128 mm

Weight [kg]

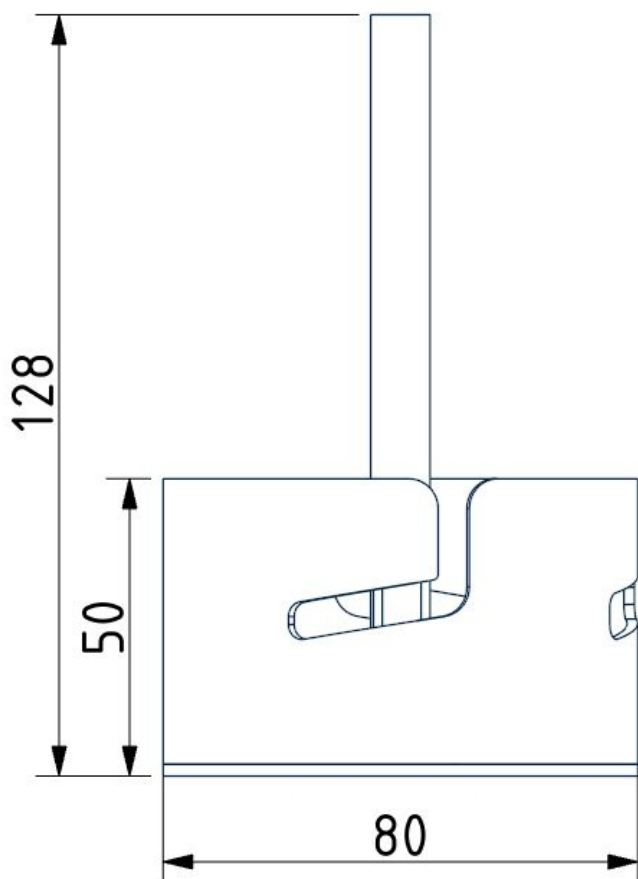
0,3 kg

Material

stainless steel



Drawing



Hole placement

