



Description

In keeping with the brand's ongoing development of new technologies at the highest levels of quality and innovation, this year the Big One collection has received a technological upgrade in the form of a new LED panel that significantly increases the output of the lights. Enhanced metal components simplify handling. The outer glass features a gloss finish in the following colour options: transparent, smoke grey transparent, and a new smoke brown. The inner glass features a matte finish in the following colour options: triplex opal, smoke grey transparent, red transparent, light pink transparent, and a new smoke brown. The Big One collection is available in two sizes.

Tech. description

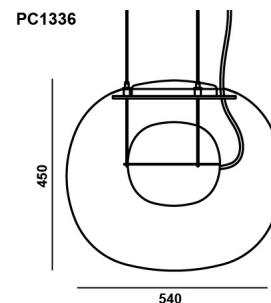
The Big One collection has undergone technological improvements in 2022 and 2023. The two halves of the glass core of the light are coupled by means of milled dural rings fitted with LED modules. The outer glass sphere is attached to the stainless-steel wire suspension ropes with a sophisticated mechanism that allows disassembly and reassembly by simply releasing the levers on top of the ring. The light is hung from a steel ceiling canopy, which also houses the electronics.

Available colour options: <https://mbapi.cz/red/pis/eu/en/pc1336>

CONSTRUCTION SPECIFICATION

Weight:	10.5 kg
Construction material:	glass, metal
Cord length [mm]:	2,200 mm
Mounting:	Ceiling
Environment:	Indoor

DIMENSIONS [mm]



ELECTRICAL SPECIFICATION

Input voltage [V]:	100 - 240 V
Frequency [Hz]:	50-60 Hz
Max. power [W]:	20 W
Coverage IP:	20
Socket:	-
Light source:	2x LED module
Energy class:	E

CERTIFICATIONS





**CM16713 LED modul BIG ONE L/
1CHx48LED D=160mm/10W - DNA/
RA90/2700K**

Type	LED module
Lamp wattage [W]	10 W
Input voltage [V]	24 VDC
Energy class	E
Flux [lm]	1296 lm
Light colour [K]	2700 K
CRI	90+
Dimmable	yes



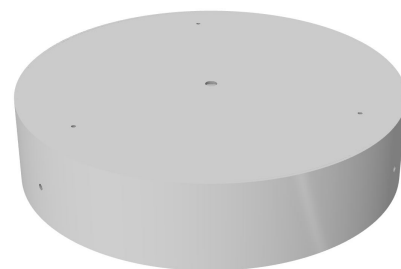
**CM16477 LED modul BIG ONE L/
2CHx48LED D=160mm/10W - DNA/
RA90/2700K/6500K**

Type	LED module
Lamp wattage [W]	10 W
Input voltage [V]	24 VDC
Energy class	E
Flux [lm]	1296-1391 lm
Light colour [K]	2700-6500 K
CRI	90+
Dimmable	yes - tunable white

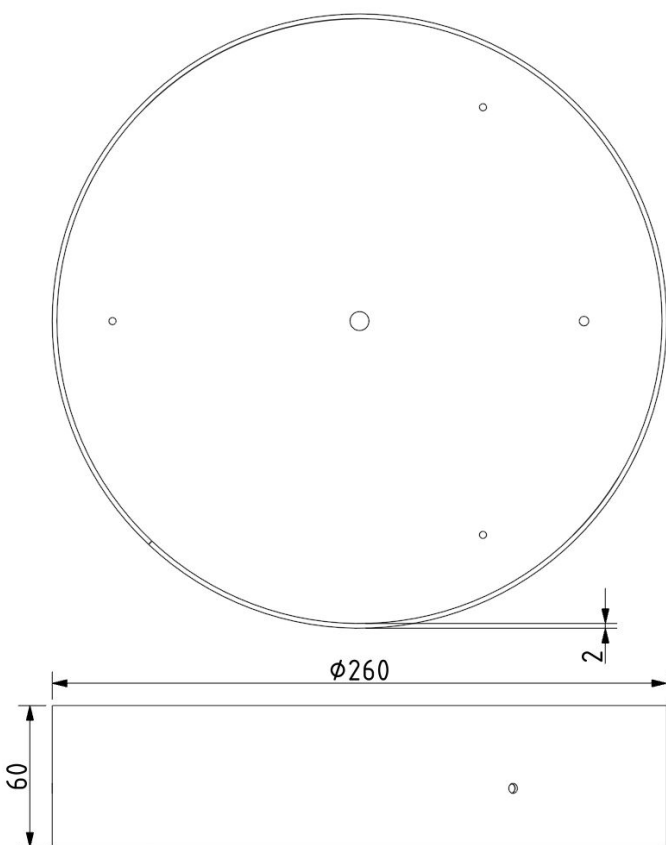


INNER FIXTURE

Dimensions O x w [mm]	260 x 60 mm
Weight [kg]	2.3 kg
Material	metal



Drawing



Hole placement

