

# DATASHEET

Type: **AWA**  
Name: Pendant light  
ID: PC1129  
Designed by: Fumie Shibata Desing SS company



Download

## Description

A ball made from air wrapped in liquid is called "Awa" in Japanese. This design sprung from the idea of creating resembling soft glass that has retained its shape after being inflated.



## Tech. description

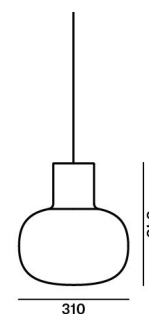
The light comprises a metal body with wooden or metal cover, power cord, and glass diffuser suspended from three points. The light is attached to a ceiling canopy.

Available colour options: <https://mbapi.cz/red/pis/eu/en/pc1129>

## CONSTRUCTION SPECIFICATION

Weight (kg)	3.5kg
Construction material	glass, wood, metal
Cord length (mm)	2,000m
Mounting	Ceiling
Environment	Indoor

## DIMENSIONS [mm]



## ELECTRICAL SPECIFICATION

Input voltage (V)	230 V
Frequency (Hz)	50-60 Hz
Max. power (W)	40 W
Coverage IP	20
Socket	E27
Light source	-
Energy class	A+ to E depending on light source

## CERTIFICATIONS



BROKIS S.R.O.  
ŠPANILOVA 1315/25  
163 00 PRAHA 6 - ŘEPY  
CZECH REPUBLIC

ORG ID 64940799  
VAT ID CZ64940799  
C 42174 MĚSTSKÝ SOUD  
V PRAZE

TEL +420 567 211 517  
TECHNICAL@BROKIS.CZ  
INFO@BROKIS.CZ  
WWW.BROKIS.CZ

2020\_11  
PAGE 1

# DATASHEET

## RECOMMENDED BULBS

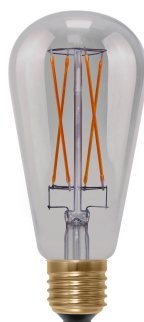


Download



**CM7762 Segula E27 LED filament**  
**12W 500lm 220-240V**

Socket	E27
Type	LED
Lamp wattage [W]	12 W
Input voltage [V]	220 - 240 VAC
Energy class	B
Flux [lm]	600 lm
Light colour [K]	2600 K
CRI	90+
Lifespan [h]	15000h
Dimmable	yes
Dimensions h x w [mm]	100 x 140 mm



**CM8510 Rustika E27 LED filament**  
**6W 250 lm 2000K 220-240 V**

Socket	E27
Type	LED
Lamp wattage [W]	6 W
Input voltage [V]	220 - 240 VAC
Energy class	B
Flux [lm]	200 lm
Light colour [K]	2000 K
CRI	90+
Lifespan [h]	20000h
Dimmable	yes
Dimensions h x w [mm]	142 x 62 mm



BROKIS S.R.O.  
ŠPANIELOVA 1315/25  
163 00 PRAHA 6 - ŘEPY  
CZECH REPUBLIC

ORG ID 64940799  
VAT ID CZ64940799  
C 42174 MĚSTSKÝ SOUD  
V PRAZE

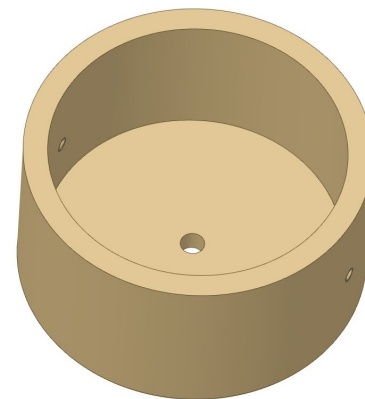
TEL +420 567 211 517  
TECHNICAL@BROKIS.CZ  
INFO@BROKIS.CZ  
WWW.BROKIS.CZ

2020\_11  
PAGE 2

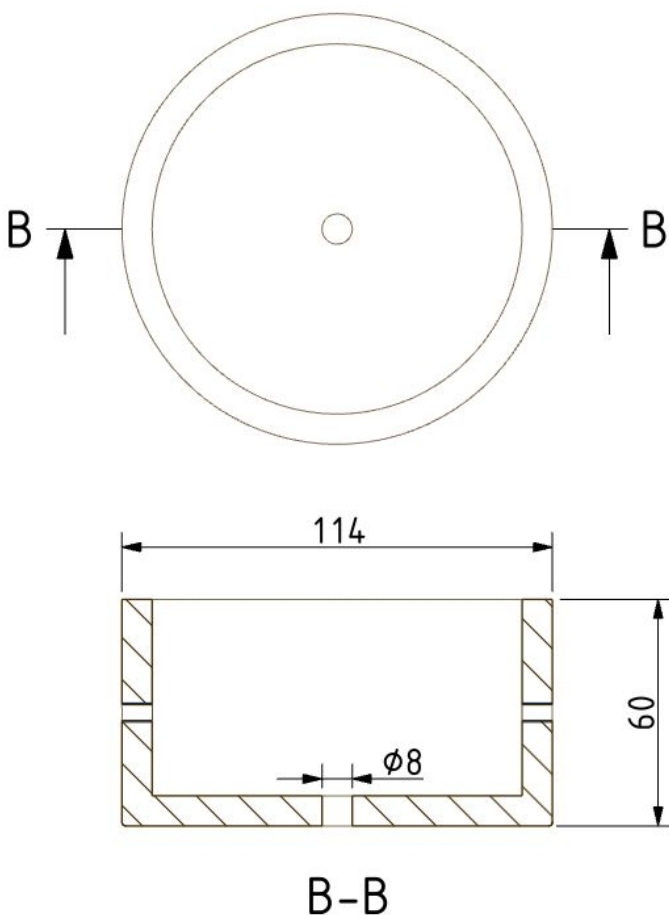


### INNER FIXTURE

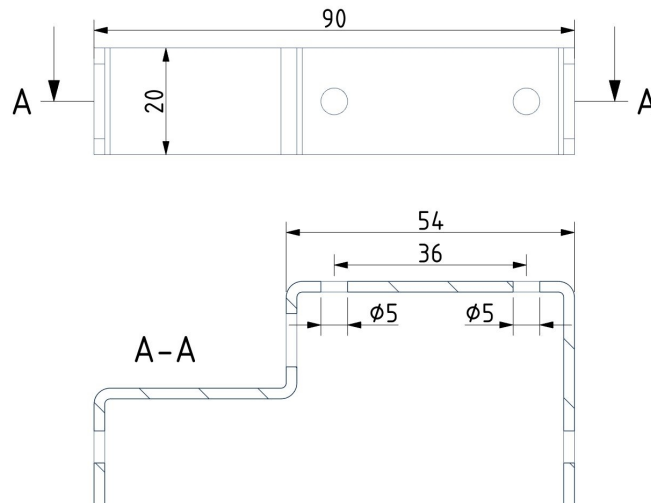
Dimensions O x w [mm] 114 x 60 mm  
Weight [kg] 0.17 kg  
Material wood



### Drawing



### Hole placement

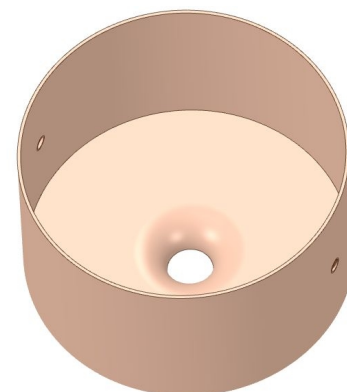




### INNER FIXTURE

Dimensions O x w [mm]  
Weight [kg]  
Material

Dimensions O x w [mm]  
Weight [kg]  
Material



### Drawing

### Hole placement

